

**Lower St. Croix Watershed Partnership**

<p><b>Policy Committee Meeting #14</b></p>		<p><b>Vision</b> The St. Croix River, groundwater, lakes, streams, rivers, wetlands, and upland habitat in the Lower St. Croix watershed sustain healthy ecosystems, recreation, public health, tourism, agriculture, the economy, and quality of life in our communities.</p> <p><b>Mission</b> Guide protection and restoration of priority natural resources in the Lower St. Croix watershed over the next ten years through implementation of the Lower St. Croix Comprehensive Watershed Management Plan.</p>
<p><b>January 22, 2024</b> 4:00-6:00 PM</p>		
<p><b>Wyoming Area Library</b> 26855 Forest Blvd, Wyoming, MN 55092</p> <p>Optional zoom call-in: <a href="https://us02web.zoom.us/j/86852941439?pwd=RzRlZmVsMG9GR2VWZkI2RVJlTjI4Zz09">https://us02web.zoom.us/j/86852941439?pwd=RzRlZmVsMG9GR2VWZkI2RVJlTjI4Zz09</a> Meeting ID: 868 5294 1439 Passcode: 935899</p>		
	<p><b>Facilitator:</b> Angie Hong</p>	<p><b>Note taker:</b> Barbara Heitkamp</p>
<p><b>Invited:</b></p>	<p>Anoka SWCD: Kate Luthner Brown's Creek WD: Klay Eckles Carnelian Marine St Croix WD: Kristin Tuenge Chisago County: Dan Dahlberg, Lance Petersen and Mike Mergens Chisago SWCD: Jim Birkholz Comfort Lake Forest Lake WD: Jackie Anderson Isanti County: Kristi LaRowe Isanti SWCD: Tom Anderson Middle St. Croix WMO: Brian Zeller Pine County: Steve Hallan Pine SWCD: Doug Odegard South Washington WD: Sharon Doucette Valley Branch WD: Ed Marchan Washington County: Fran Miron Washington SWCD: Diane Blake</p> <p>Copied: Policy Committee alternates; Advisory Committee members</p>	
<p><b>Meeting packet:</b></p>	<ul style="list-style-type: none"> <li>• Oct. 23, 2023 Meeting Minutes</li> <li>• Memo - Valley Branch Watershed District Plan Update Public Hearing</li> <li>• Program logs for Fy21 and Fy23 WBIF grants</li> <li>• Memo - Supplemental Funding Request Update</li> <li>• Memo - St. Croix River as a Priority Water Body</li> </ul>	

## Agenda Items

Topic	Purpose	Lead	Time
1. Welcome and introductions	---	Policy Committee	5 min.
2. Approve 1-22-24 agenda	DECIDE	Policy Committee	5 min.
3. Election of officers	DECIDE	Policy Committee	5 min.
4. Approve 10-23-23 minutes	DECIDE	Policy Committee	5 min.
5. Public hearing for VBWD amendment to the Lower St. Croix River Comprehensive Watershed Management Plan	DISCUSS	Policy Committee	10 min.
6. Updates on 2024 Lower St. Croix Watershed Plan Implementation <ul style="list-style-type: none"> <li>• WBIF Financial Report (FY21 &amp; 23)</li> <li>• CWF Soil Health Grant</li> <li>• Program updates</li> <li>• Hiring update for agronomy outreach specialist</li> </ul>	INFO	Craig Mell Barbara Heitkamp Angie Hong	30 min.
7. Project Highlight: <ul style="list-style-type: none"> <li>• Randy Hinze – 2023 Minnesota Conservation Cooperator of the Year</li> </ul>	INFO	Paul Swanson, Pine SWCD	20 min.
8. Update on FY23 supplemental funding request	DECIDE	Craig Mell, Chisago SWCD	5 min.
9. Minor correction of plan language to clarify St. Croix River as a priority water body	DISCUSS	Jay Riggs, Washington CD	5 min
10. Set 2024 meeting calendar	DISCUSS	Policy Committee	5 min.
11. Adjourn	DECIDE	Policy Committee	5 min.

**Lower St. Croix Watershed Partnership – DRAFT MINUTES**

<p><b>Policy Committee</b> <b>Meeting #13</b></p>	<p><b>Vision</b> The St. Croix River, groundwater, lakes, streams, rivers, wetlands, and upland habitat in the Lower St. Croix watershed sustain healthy ecosystems, recreation, public health, tourism, agriculture, the economy, and quality of life in our communities.</p> <p><b>Mission</b> Guide protection and restoration of priority natural resources in the Lower St. Croix watershed over the next ten years through implementation of the Lower St. Croix Comprehensive Watershed Management Plan.</p>	
<p><b>October 23rd, 2023</b> 4:00-6:00 PM</p>		
<p><b>Wyoming Area Library</b> 26855 Forest Blvd, Wyoming, MN 55092</p> <p>Recording: <a href="https://youtu.be/g07mF-rvYk0">https://youtu.be/g07mF-rvYk0</a></p>		
	<p><b>Facilitator:</b> Angie Hong</p>	<p><b>Note taker:</b> Barbara Heitkamp/Angie Hong</p>
<p><b>Attending:</b></p>	<p>Anoka SWCD: Sharon LeMay Brown's Creek WD: Jerry Johnson (alternate) Carnelian Marine St Croix WD: Kristin Tuenge Chisago County: Mike Mergens, Dan Dahlerg, and Lance Petersen (virtual) Chisago SWCD: Jim Birkholz Comfort Lake Forest Lake WD: Jackie Anderson Isanti SWCD: Tom Anderson Pine SWCD: Doug Odegard South Washington WD: Kevin ChapdeLaine (virtual) Washington County: Fran Miron Washington SWCD: Diane Blake</p> <p>Staff: <u>In-person</u>: Angie Hong (EMWREP), Barbara Heitkamp (Lower St. Croix Watershed Partnership), Craig Mell (Chisago SWCD), Michelle Jordan (BWSR), Stephanie Souter (Washington County), Jaime Schurbon (ACD), John Loomis (SWWD) <u>Virtual</u>: Laura Jester (Keystone Waters), Jessica Collin-Pilarski (Washington County), John Hanson (Valley Branch WD), Joel Larson (UMN Extension), Matt Moore (SWWD), Emily Heinz (CLFLWD), Susanna Wilson-Witkowski (Chisago County)</p>	
<p><b>Absent:</b></p>	<p>Isanti County: Kristi LaRowe Middle St. Croix WMO: Brian Zeller Pine County: Steve Hallan Valley Branch WD: Ed Marchan</p>	

## MINUTES:

The meeting was called to order at 4:06 pm by Chair Fran Miron.

**Approve agenda:** Motion to approve corrected agenda by Jackie Anderson. Second by Doug Odegard. All in favor. Agenda approved.

### Approve meeting minutes from the July 24th, 2023 meeting

- Motion to approve the 7-24 meeting minutes by Mike Mergens. Tom Anderson seconds. All in favor. The meeting minutes were approved.

### Updates on LSC Plan Implementation:

- Craig Mell with a financial update:
  - FY21 funds have been encumbered with 85% of the money spent. \$123K remaining for the SWWD Trout Brook project. All construction has been completed, but project will not be brought online till the spring to allow vegetation to establish.
  - In August we applied for 1-yr grant extension for FY21 funding from BWSR and it was approved, so no issues waiting to close out by December 31<sup>st</sup>, 2024
  - FY23 funding is currently 77% encumbered, with 25% nearly spent.
  - CWF soil health grant which currently funds LSC non-structural program: currently \$36K still unencumbered, grant runs through the end of 2025.
- Barbara Heitkamp with education update
  - Showed 2023 progress/update video: <https://youtu.be/uoQnnueiG64?si=oFwplnxOW5khG2bY>
  - Fran Miron: Would love to see this disseminated widely – BWSR, DNR, etc.
  - Jim Birkholz: I would recommend sending this to Wisconsin LSC LGUs and partners
  - Jackie Anderson: Send to the counties as well.
- Angie Hong with project updates
  - Refer to ppt
  - Jackie Anderson: for the targeting and prioritization analyses – who is doing the work?
    - Angie: All being completed by partner staff
  - Barbara Heitkamp: I really would love to connect with ongoing fall street sweeping efforts.
    - Craig: North Branch is getting ready to move forward – will put you in touch.
- Jennifer Hahn resignation and moving forward
  - Barbara Heitkamp: The original A1 subcommittee has reconvened to map a path forward. We are using this as an opportunity to check in on what worked with Jennifer’s position and what didn’t work. UMN Extension is still interested in maintaining the embedded educator collaboration, but they are hoping to update the job description so it truly fits with Extension’s strengths, with the recognition that what they can offer may or may not fit with our overall vision. At the most recent meeting, the subcommittee decided that it was too short of a collaboration to truly assess how it was working, and they signaled that they wanted to continue working with Extension.
  - Jim Birkholz, Jackie Anderson, and Fran Miron all expressed support for continuing the collaboration with Extension.

- Fran Miron: What is the timeline? UMN-Extension process will likely take longer given University processes?
  - Barbara Heitkamp and Craig Mell: Hope to have new person hired before end of Q1 2024.

### **Sunrise River (HWY 61) Wetland Enhancement Presentation**

- Jackie Anderson context/intro:
  - This project has been a huge priority for us as it addresses the major land use changes we've seen in the area historically.
  - Was originally a large wetland complex that was ditched for ag fields and development. As Forest Lake and Wyoming has continued to develop and we've seen conversion from ag to residential, the ag ditches are carrying stormwater runoff that eventually makes its way to the Sunrise River
  - Over the course of the larger project, have been able to experience seasons of high and low water – helps better inform project design
- Emily Heinz – refer to ppt
  - Jackie Anderson: Good to remember that the CLFLWD standards are stricter than state standards – building in more resiliency given climate change
  - Jackie Anderson: We are reducing the tremendous amount of sediment that enters Forest Lake (and hence, downstream Sunrise River, Comfort Lake and Lower St. Croix) with this project
- Fran Miron: Given the projected design lifetime, what is the expected maintenance?
  - Jackie Andersen: Definitely will need money to maintain throughout expected lifespan, but CLFLWD will perform post-project monitoring to anticipate issues so costs hopefully reasonable and as expected.
- Kristin Tuenge: How has business/local community engaged the project?
  - Jackie Anderson: HUGE support from local community and businesses – many of them voluntarily doing what they can to reduce runoff (underground treatment systems or facilitating a contribution/trade for impact mitigation)

### **Trout Brook Restoration Update Presentation**

- John Loomis: Context/Intro
  - This is a multi-phase project, land has logging history and then farmed, now rural/residential with hobby farms
  - Past land use legacy means large sediment loads delivered into Trout Brook (and on to the nearby St. Croix River), still seeing severe bank and bed erosion and large loss of fish habitat.
  - Project area is state park land into the Afton Alps ski area – mostly been a ditch through the commercial use area
  - No longer see the pools, runs, and riffles you would expect to see in a healthy trout stream – overall project goal is to reduce sediment/phosphorus inputs and restore habitat function
  - Been three phases of work (refer to John's ppt):
    - Phase I: Remove headcuts to reduce erosion in upland state park, create benches to allow floodplain connection - some worked, some failed!

- Phase II (2019-2020): Rebuilt channel through Afton Alps area, removed/replaced pair of perched culverts with large box culvert,
- Phase III (2021-present): Removed another fish barrier, created step-pool morphology to dissipate energy versus use of meandering in constrained Afton Alps area, re-meandered stream in state park downstream
- Project construction is now complete, but since there was a delayed start of construction due to early spring flooding in Lower St Croix and prolonged drought this summer, seeds haven't had a decent opportunity to take – really need the vegetation to provide overall new slope stability
- Project will come online next spring.
- Clean Water Council visited the project in September – we are putting up lots of signage about the project since it is in a highly visible area
- Kevin ChapdeLaine: Can you provide some of the outcome numbers from the project?
  - John Loomis: 150 lbs/hr phosphorus, 150-170 tons/yr sediment, fish count numbers went from 5 or less per mile to sections with over 1000 fish per mile.
- Fran Miron: Can you summarize the cost?
  - John Loomis: Phase III, with engineering was about \$1M (LSCWP funded \$350K of that)
  - Fran Miron: Cost of all phases?
    - John Loomis: About \$2M – half grants, half local funding
- Tom Anderson: How has it been working with Afton Alps? How are they intending to handle snow/ice removal in their parking lot given it is adjacent to the stream?
  - John Loomis: They have been a great partner – based out of CO – so really interested in doing what they can to support and help mitigate impacts
  - Established a conservation easement on land adjacent to Trout Brook
  - SWWD is housed with public works department and we've held meetings to discuss best snow/ice management approaches, lately showed them a graveling technique that will be really useful to them.
- Jackie Anderson: I really applaud the step-pool approach given space constraints.

### **Valley Branch WD Plan Amendment Request**

- John Hanson: A year ago the Policy Committee approved an amendment to include 2 waterbodies in the VBWD as priority waterbodies in the LSC CWMP. The amendment went to all local partners and was approved.
- BSWR had to come up with a process given this is the first amendment to a CWMP – recommendation to follow the minor amendment process
- We need to send out a request for comment and have a public hearing on the amendment at the next PC meeting (January 22<sup>nd</sup>, 2024).
- Jackie Anderson motions to schedule public meeting for January 22<sup>nd</sup> to hear amendment. Doug Odegard seconds. All in favor, motion carried.

### **FY23 Supplemental Funding Request**

- Craig Mell: Two weeks ago, we received notification that there is \$7.75M of WBIF funding available for non-metro areas. Funding is in addition to FY23 funding. Today we are looking for a recommendation

by the PC for the Steering Committee to pursue this funding by the January 8<sup>th</sup> deadline. Receiving the funds would require a workplan amendment.

- Michelle Jordan: Funding would follow the FY23 funding deadline – would need to be spent by December 2025. You can include increased costs for administration given time needed to manage additional funds.
- Craig Mell: We have been collecting a project ‘wish list’ from all LSC partners with projects that could fit this funding. Steering Committee will vet this list and decide on a number to spend. Current number given what has been submitted from partners thus far: \$5.6M
- Michelle Jordan: This is the first time this has happened – we don’t know if it will happen again. We will mimic the non-competitive process as much as we can, but there is much uncertainty about how much you will get.
- Craig Mell: Given that is specifically non-metro allocated funding, it will follow a similar process by which the metro group chooses to make WBIF funding available for the entire LSC basin.
- Jackie Anderson: What caused this surplus of funds?
  - Michelle Jordan: Some 1W1Ps aren’t as far along in implementation as was expected, and others aren’t spending all their funds.
- Jackie Anderson: I would love to use this to help accelerate some projects.
- Jim Birkholz: Seems very practical
- Kristin Tuenge: When would we receive the funds?
  - Likely March 2024 or after
- General group consensus for Steering Committee to submit a request for additional funding.

### **LSC 2024 Workplan Approval**

- Laura Jester: Bringing this 2024 Work plan today – trying to make it as straightforward as possible for you to take to your local partners. Every other year we’re bringing you the higher-level biennial work plan – this annual plan essentially splits the work outcomes of that biennial plan. This also includes all of the policies and project request calendars so everything moves together.
- Jackie Anderson: Is it possible to make this more targeted?
  - Staff or PC could make recommendations, but the currently approved plan doesn’t have that targeting aspect – we have priority water bodies.
- Fran Miron: Starting today, local partners have 60 days to review and approve the 2024 workplan – please get it to your boards!
- Motion to recommend approval of 2024 Workplan: Kristin Tuenge motions, Mike Mergens seconds. All in favor, motion carries.

### **LSC FY25 WBIF Grant Funds and Allocation of Metro Funds**

- Craig Mell: Anticipating the FY2025 WBIF allocation to go up from \$1.2M to \$2.0M; we are starting the metro convening process where metro partners decide whether to allocate part to all of that WBIF funding to the fuller basin
- Jackie Anderson: In talking at MAWD meeting, the process will start to come together in mid-December
- Craig Mell: We hope to have the metro partners decision on the metro portion of the WBIF grant funds by the end of Q1 2024. Tom Dietrich at Washington County has left – he worked to bring the metro

partners together previously. Does anybody object to having BWSR help facilitate the convening process? Or does another partner want to lead?

- Fran Miron: I think our overall approach to date has worked well. I have no issues with BSR convening the meeting.
- Group consensus that we will ask BSWR to facilitate the metro convening process.

**Other Business:**

- Craig Mell: Sharon LeMay (Anoka SWCD) is retiring – this will be her last meeting.
- Thank you Sharon!!

**Next Meeting: January 22<sup>nd</sup>, 2024** – Angie will look into a recommended Forest Lake meeting space.

Jackie Anderson moves to adjourn meeting. Jerry Johnson seconds. Meeting was adjourned at 6:03 pm.





## Memorandum

**To:** Lower St. Croix River Watershed Partnership Policy Committee  
**From:** John Hanson, Valley Branch Watershed District  
**Subject:** Lower St. Croix River Comprehensive Watershed Management Plan Amendment  
**Date:** January 8, 2024  
**Project:** 2382016.20 2023 003  
**c:** Michelle Jordan and Angie Hong

### Background

At the September 26, 2022, meeting, the Policy Committee approved a Lower St. Croix River Comprehensive Management Plan (Plan) amendment requested by the Valley Branch Watershed District (VBWD). The request was to:

1. Add Valley Creek and Kelle's Creek to the other regionally significant streams listed in Table 5-2 and Figure 5-2.
2. Add completed subwatershed assessments and inventories to Table 7-1.

After Policy Committee approval, the proposed amendment (see attached) was approved by all of the current partnership members, and the VBWD requested guidance from the Minnesota Board of Water and Soil Resources (BWSR) on how to proceed.

In October 2023, BWSR approved a process for amending plans and suggested following the minor amendment procedure. The VBWD, as the partner requesting the amendment, sent Plan review authorities the proposed amendment for a 30-day comment period on November 22, 2023; comments were due on December 29, 2023. The VBWD and BWSR received no negative comments or any requests to extend the review and comment period. Only "no comment" comments or supportive comments were received.

### Requested Policy Committee Action

1. Hold public hearing on plan amendment and record comments
2. If no negative comments are received:
  - a. Adopt the minor plan amendment
  - b. Direct staff to incorporate the minor amendment into the Plan and post it to the Partnership's website
  - c. Direct the VBWD to distribute the final amendment to all parties who received the initial notification according to the method consistent with the recipient's requirements
3. If negative comments are received, forward them to BWSR and VBWD to address

However, one responder suggested that the St. Croix River be added to Table 5-2 as a priority waterbody. BWSR reviewed the suggestion and determined that adding another water resource to the table, beyond what was proposed in the original amendment, is a significant deviation and should be treated separately. Adding the St. Croix River as a priority waterbody should go through the same amendment process as the current request by the VBWD.

On January 8, 2024, BWSR provided their decision that it agrees the amendment is a minor plan amendment (see attached letter).

### **Public Hearing and Next Steps**

As part of the plan amendment process, the Policy Committee approved setting a January 22, 2024, public hearing on the proposed plan amendment. The public hearing provides the opportunity for the Policy Committee to hear and record comments. The Policy Committee Chair should ask the meeting attendees three times if they have any comments on the proposed amendment, which is posted on the Lower St. Croix River Watershed Partnership's website.

Assuming there are no negative comments at the public hearing, the Policy Committee can adopt the minor plan amendment at its January 22, 2024, meeting and the minor plan amendment can be incorporated into the Plan, posted to the Lower St. Croix River Watershed Partnership website, and the VBWD will distribute the final amendment to all parties who received the initial notification according to the method consistent with the recipient's requirements (electronic, hard copy, or web link).

Table 5-2. Regionally Significant Rivers and Streams for Pollutant Reductions (See Figure 5-2)

Stream Name	Lake St. Croix TMDL Total Phosphorus Reduction Goal (lbs/yr) <sup>1</sup>	10-year TP Reduction Goal (lbs/yr) <sup>2</sup>
Sunrise River and Tributaries	18,306	2,256
Lawrence Creek <sup>3</sup>	1,177	118
Browns Creek <sup>4</sup>	848	85
<u>Valley Branch (includes Valley Creek and Kelle's Creek)<sup>3</sup></u>	<u>968</u>	<u>97</u>
Trout Brook <sup>3</sup>	1,419	142
Small Streams Draining to St. Croix River (south of Lawrence Cr & north of Valley Br.)	6,450	645
Rock Creek	3,512	351
Rush Creek	2,451	245
Goose Creek	2,980	298
<b>TOTAL</b>	<b><u>37,143,38,111</u></b>	<b><u>4,140,237</u></b>
<p>(1) Table B-7, 2012 Lake St. Croix Total Maximum Daily Load Study                      (2) 10% per stream + 425 lbs for stream restoration projects in Sunrise River Watershed                      (3) According to Lake St. Croix TMDL: Actual phosphorus load reduction goals in Lawrence Creek, <u>Valley Branch</u>, and Trout Brook may be smaller than shown (possibly even zero) due to substantial landlocked portions resulting in smaller drainage areas than those used to calculate load reductions.                      (4) Browns Creek reduction goal based on Implementation Plan for Lake St. Croix Nutrient TMDL (2013), App B.</p>		

	street sweeping; lakeshore restorations. Projects modeled for estimated pollution reduction and project cost.	
McKusick Lake Subwatershed Assessment	<u>Urban and Shoreline:</u> Variety of stormwater retrofit approaches were identified including maintenance of, or alterations to, existing stormwater treatment practices; residential curb-cut rain gardens; swales with check dams; street sweeping; lakeshore restorations. Projects modeled for estimated pollution reduction and project cost.	Washington Conservation District, Middle St Croix WMO <a href="http://www.metrotsa4.org/swa">www.metrotsa4.org/swa</a>
Lily Lake Subwatershed Assessment	<u>Urban and Shoreline:</u> Variety of stormwater retrofit approaches were identified including maintenance of, or alterations to, existing stormwater treatment practices; residential curb-cut rain gardens; swales with check dams; street sweeping; lakeshore restorations. Projects modeled for estimated pollution reduction and project cost.	Washington Conservation District, Middle St Croix WMO <a href="http://www.metrotsa4.org/swa">www.metrotsa4.org/swa</a>
Perro Creek Subwatershed Assessment	<u>Urban and Streambank:</u> Variety of stormwater retrofit approaches were identified including maintenance of, or alterations to, existing stormwater treatment practices; residential curb-cut rain gardens; swales with check dams; street sweeping; stream restorations. Projects modeled for estimated pollution reduction and project cost.	Washington Conservation District, Middle St Croix WMO <a href="http://www.metrotsa4.org/swa">www.metrotsa4.org/swa</a>
St Croix River Direct PII Subwatershed Assessment	<u>Urban and Shoreline:</u> Variety of stormwater retrofit approaches were identified including maintenance of, or alterations to, existing stormwater treatment practices; residential curb-cut rain gardens; swales with check dams; street sweeping; lakeshore restorations. Projects modeled for estimated pollution reduction and project cost.	Washington Conservation District, Middle St Croix WMO <a href="http://www.metrotsa4.org/swa">www.metrotsa4.org/swa</a>
Top50P! Subwatershed Assessment	One of the first Rural SWAs. Identifies and ranks the Top 50 potential BMPs to reduce Phosphorus loads to the St. Croix from the rural portion of Washington County, south of I94.	Washington Conservation District, Middle St. Croix WMO, Valley Branch WD, South Washington WD <a href="http://www.metrotsa4.org/swa">www.metrotsa4.org/swa</a>
DeMontreville Lake Subwatershed Assessment	<u>Urban and Shoreline:</u> Variety of stormwater retrofit approaches were identified including maintenance of, or alterations to, existing stormwater treatment practices; residential curb-cut rain gardens; swales with check dams; street sweeping; lakeshore restorations. Projects modeled for estimated pollution reduction and project cost.	Washington Conservation District, Valley Branch WD <a href="http://www.metrotsa4.org/swa">www.metrotsa4.org/swa</a>
<u>Kelle's Creek/Sunfish Lake TMDL</u>	<u>Identifies sources of pollution and an implementation plan to reduce pollution</u>	<u>Minnesota Pollution Control Agency</u>

		<a href="#">Valley Branch Watershed District Total Maximum Daily Load (TMDL) (state.mn.us)</a>
<a href="#">Valley Branch Watershed District Watershed Restoration and Protection Strategy Report Lower St. Croix River-Major Watershed</a>	<a href="#">Assessed nutrient loads and identified implementation projects for Sunfish Lake (impaired), Eagle Point Lake, Lake Edith, Silver Lake (impaired), and Horseshoe Lake, and assessed bacteria source and identified implementation projects for Kelle’s Creek</a>	<a href="#">Minnesota Pollution Control Agency Valley Branch Watershed District Watershed Restoration and Protection Strategy (WRAPS) Report (state.mn.us)</a>

There are a variety of pollution reduction estimation tools available to analyze different types of projects. In general, the following types of projects will be analyzed with the listed estimation tools.

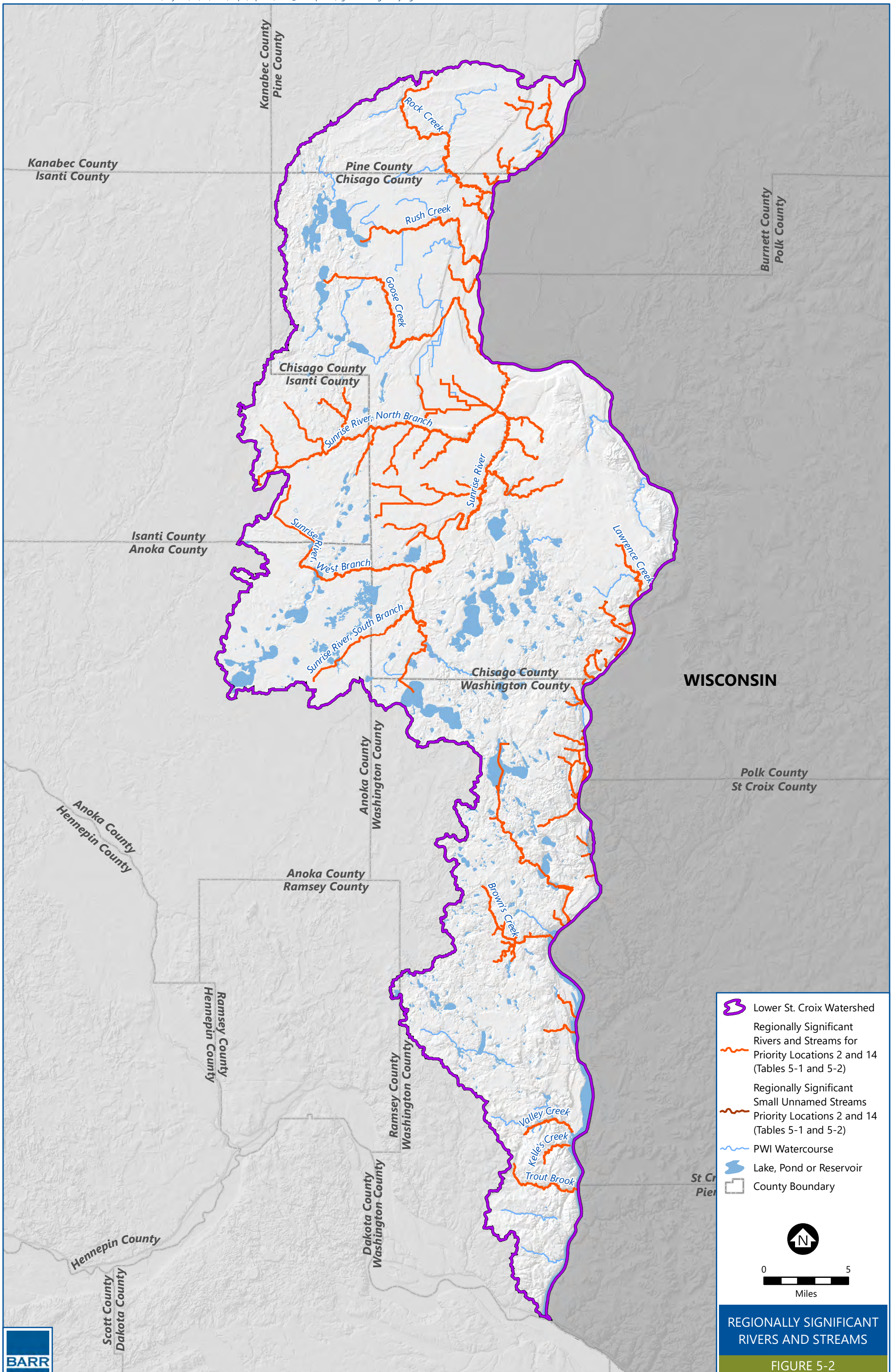
- Urban stormwater BMPs: MIDS calculator for volume, total suspended solids, and total phosphorus (particulate and dissolved)
- Agricultural runoff BMPs: PTMApp, SWMM, RUSLE2, Simple method, ACPF or BWSR Pollutant Reduction Estimator
- Gully stabilization BMPs or streambank/shoreline restoration BMPs: BWSR Pollutant Reduction Estimator or an alternate method agreed to by the Steering Committee
- Wetland Restoration for Pollutant Reduction: Estimation via outflow monitoring or other methods agreed to by the Steering Committee
- In-lake internal loading treatment: Internal loading analysis

Some proposed activities, such as habitat restoration or land protection, will not be able to be analyzed for pollutant reductions. In those cases, it will take a discussion of the proposed project’s merits and the opportunity it offers to address issues and meet the goals and outcomes of this Plan to determine if WBIFs are warranted during that fiscal year.

When possible, proposed projects that meet the gatekeeper criteria, should be scored using the targeting criteria and scoring matrix ([Appendix C](#)). Resulting scores for projects, such as best management practices in urban and agricultural areas, will be used as guidance by the Steering Committee to compare and contrast various projects being considered for inclusion in the annual work plan. Components of the targeting criteria and scoring matrix include:

- Cost benefit
- Proximity to stream or river
- Reduction of total phosphorus in highest priority lakes on Minnesota’s Lake Phosphorus Sensitivity Significance List
- Multiple benefits such as groundwater protection, flood reduction, habitat improvements, and educational opportunities
- Project readiness and urgency
- Partnerships and funding leveraged









**Board of Water and Soil Resources**  
**520 Lafayette Road North**  
**St. Paul, MN 55155**

January 8, 2024

Lower St. Croix Watershed Partnership Policy Committee Members  
c/o John Hanson, District Engineer  
Valley Branch Watershed District  
4300 MarketPointe Drive, Ste 200  
Bloomington, MN 55435

Mr. Hanson,

This letter is in response to Valley Branch Watershed District's initiation of a Minor Plan Amendment Procedure on behalf of the Lower St. Croix Watershed Partnership Policy Committee. During the required 30-day comment period, four entities responded. Three of the four stated they had no comment. One entity proposed adding an additional water body to the priority resource table, and this was determined to be beyond the scope of the current amendment.

As such, the Board of Water and Soil Resources (BWSR) has determined that this amendment can continue to follow the Minor Amendment Procedure.

Prior to approval of the amendment, the Lower St. Croix Watershed Partnership Policy Committee must hold a public hearing, and address any comments received and make necessary revisions in consultation with your BWSR Board Conservationist. The partnership must distribute the final amendment to all parties who received the initial notification according to the method consistent with the recipient's requirements (electronic, hard copy, or web link).

If you have any questions, or need any further assistance, please contact me at [michelle.jordan@state.mn.us](mailto:michelle.jordan@state.mn.us) or 651-308-6724.

Sincerely,

Michelle Jordan  
Board Conservationist, BWSR

CC:

Marcey Westrick, BWSR Central Regional Manager

Julie Westerlund, BWSR 1W1P Program Coordinator

Judy Sventek, Met Council Water Resources Assessment Section Manager

Jen Kostrzewski, Met Council Water Policy and Planning Assistant Manager

Reid Christianson, MDA Supervisor, Clean Water Technical Assistance Unit

Abby Shear, MDH Regional Planner

Carrie Raber, MDH Groundwater Restoration and Protection Strategies Coordinator

Jason Carlson, MN DNR Clean Water Hydrologist

Dan Lais, MN DNR Central Regional Manager, Ecological and Water Resources Division

Barbara Weisman, MN DNR Clean Water Operations Consultant

Catherine Neuschler, MN EQB

Eric Alms, MPCA Watershed Project Manager

Jeff Risberg, MPCA Watershed Unit Coordinator

*Equal Opportunity Employer*



## FY21 WBIF - Lower St. Croix Watershed Partners Grant (12/31/2023)

A		B	C	D	E	F	G
ACTIVITY		WBIF BALANCE	MATCH BALANCE	AMOUNT WBIF's ENCUMBERED (Sub-Agreements)	AMOUNT WBIF's SPENT	PERCENT WBIF's ENCUMBERED	PERCENT WBIF's SPENT
A1	Basin Ag Outreach Program	\$ 200,000.00	\$ -	\$ 200,000.00	\$ 185,305.92	100%	93%
A2	Structural Ag BMP Implementation	\$ 107,174.00	\$ 55,000.00	\$ 103,582.39	\$ 103,582.39	97%	97%
A3	Shared Services Educator	\$ 125,000.00	\$ 4,800.00	\$ 125,000.00	\$ 149,983.85	100%	120%
A4	Non-Structural BMPs	\$ 100,000.00	\$ -	\$ 100,000.00	\$ 97,540.00	100%	98%
A5	Structural Urban BMP Implementation	\$ 360,000.00	\$ 70,000.00	\$ 360,000.00	\$ 233,547.00	100%	65%
A6	Wetland Restoration Implementation	\$ 105,857.00	\$ -	\$ 105,843.07	\$ 105,843.07	100%	100%
A7	Internal Analyses	\$ 16,500.00	\$ -	\$ 16,500.00	\$ 16,500.00	100%	100%
A8	Targeting Analyses	\$ 150,000.00	\$ -	\$ 146,413.40	\$ 136,231.03	98%	91%
A9	Technical/Engineering	\$ -	\$ -	\$ -	\$ -		
A10	Administration/Coordination	\$ 100,000.00	\$ -	\$ 107,192.14	\$ 109,544.74	107%	110%
<b>PROJECT BALANCE:</b>		<b>\$ 1,264,531.00</b>	<b>\$ 129,800.00</b>	<b>\$ 1,264,531.00</b>	<b>\$ 1,138,078.00</b>	<b>100%</b>	<b>90%</b>

<b>FY23 WBIF - Lower St. Croix Watershed Partners Grant (12/31/2023)</b>						
<b>A</b>	<b>B</b>	<b>C</b>	<b>D</b>	<b>E</b>	<b>F</b>	<b>G</b>
	<b>WBIF BALANCE</b>	<b>MATCH BALANCE</b>	<b>AMOUNT WBIF's ENCUMBERED (Sub-Agreements)</b>	<b>AMOUNT WBIF's SPENT</b>	<b>PERCENT WBIF's ENCUMBERED</b>	<b>PERCENT WBIF's SPENT</b>
<b>A1 Structural Ag BMP Implementation</b>	\$ 140,000.00	\$ 37,500.00	\$ 62,410.00	\$ -	45%	0%
<b>A2 Structural Urban BMP Implementation</b>	\$ 118,054.00	\$ 37,500.00	\$ 45,000.00	\$ 45,000.00	38%	38%
<b>A3 Non-Structural Ag/Urban BMP Implementa</b>	\$ 122,025.00	\$ -	\$ 122,025.00	\$ 910.00	100%	1%
<b>A4 Wetland Restoration Implementation</b>	\$ 220,000.00	\$ 50,000.00	\$ 220,000.00	\$ 220,000.00	100%	100%
<b>A5 Agronomy Outreach Specialist</b>	\$ 225,000.00	\$ -	\$ 225,000.00	\$ -	100%	0%
<b>A6 Shared Services Educator</b>	\$ 270,500.00	\$ 2,857.90	\$ 227,840.00	\$ 26,186.72	84%	10%
<b>A7 Technical/Engineering</b>	\$ 40,000.00	\$ -	\$ 13,000.00	\$ -	33%	0%
<b>A8 Internal Analyses</b>	\$ 18,000.00	\$ -	\$ -	\$ -	0%	0%
<b>A9 Targeting Analyses</b>	\$ 45,000.00	\$ -	\$ 12,000.00	\$ -	27%	0%
<b>A10 Administration/Coordination</b>	\$ 80,000.00	\$ -	\$ 60,000.00	\$ 15,073.16	75%	19%
<b>PROJECT BALANCE:</b>	\$ 1,278,579.00	\$ 127,857.90	\$ 987,275.00	\$ 307,169.88	77%	24%



# LOWER ST. CROIX WATERSHED PARTNERSHIP

**TO:** Lower St. Croix Watershed Partnership Policy Committee

**FROM:** Lower St. Croix Watershed Partnership Steering Committee

**DATE:** January 12, 2024

**RE:** FY22-23 Watershed Based Implementation Funds Supplemental Funds Request

On October 3, 2023, we were notified by the MN BWSR that \$7,750,000 in FY22-23 Watershed Based Implementation Funds were available for local partners to request for continued implementation of their Comprehensive Watershed Management Plan. All partnerships with a current WBIF grant were encouraged to submit a request for the additional WBIF grant funds if they are spending previous allocations on plan priorities in a timely way.

During the October 23<sup>rd</sup> Lower St. Croix Watershed Partnership Policy Committee meeting, the Policy Committee supported the Steering Committee working to develop and submit to BWSR an application requesting FY22-23 WBIF supplemental grant funds.

The Steering Committee developed and submitted to BWSR a request for \$2,132,700 in FY22-23 WBIF supplemental grant funds. The BWSR is scheduled to notify local partners the amount of FY22-23 WBIF supplemental grant funds that they have been awarded the week of January 16<sup>th</sup>.

As of January 16<sup>th</sup>, we have not been notified by BWSR of the amount of FY22-23 WBIF supplemental grant funds that we have been awarded. We will forward this information to the Policy Committee once BWSR has notified us of the amount of funding we are scheduled to receive.

## **Recommend Policy Committee Action**

Recommend that the Lower St. Croix Watershed Partnership local boards approve the FY23 Watershed Based Implementation Funds work plan amendment to include the \$ \_\_\_\_\_ in supplemental grant funds in the overall work plan budget and to authorize the Lower St. Croix Watershed Partnership Steering Committee to determine the most effective Activity(s) that the supplemental funds will be added to for future implementation of the Lower St. Croix Comprehensive Watershed Management Plan.



## MEMORANDUM

**TO:** LSC Policy Committee

**FROM:** Jay Riggs, WCD District Manager

**DATE:** January 12, 2024

**RE:** **St Croix as a Priority Water Body in the Lower St Croix Comprehensive Watershed Management Plan**

LSCP implementation staff have identified an opportunity to provide clarification in the Lower St Croix Comprehensive Watershed Management Plan. Currently the St Croix River or Lake St Croix are not listed clearly as a priority in the plan as it is not called out in either Table 5-2 (Regionally Significant Rivers and Streams) or Table 5-3 (Regionally Specific Lakes). The plan language already references direct drainage to the St Croix as a priority, but the water body should also be referenced in Table 5-2 and 5-3 to provide clarity for agency staff.

As the St Croix Total Maximum Daily Load (TMDL) study identifies “small streams” as a significant contributor to the water body and depicts these as drainage areas, these boundaries can be used for load reduction benefits. See the attached table from the TMDL and reference to small streams in three locations. These areas are not limited to perennial streams and include directly contributing areas.

**Requested Policy Committee Action:** Request local partners to approve clarification in the Comprehensive Watershed Management Plan to include the St. Croix River and Lake as priority water bodies.