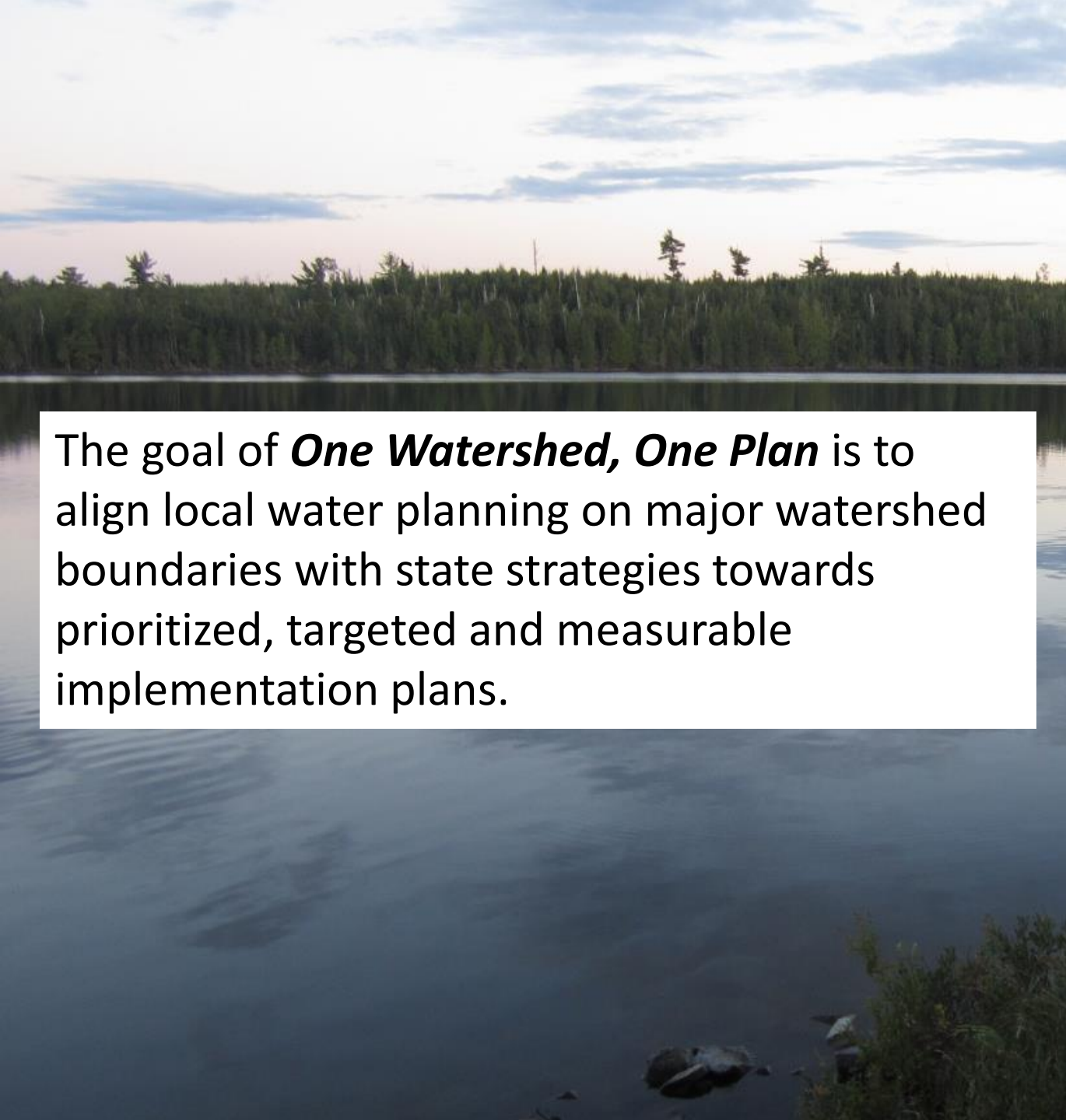


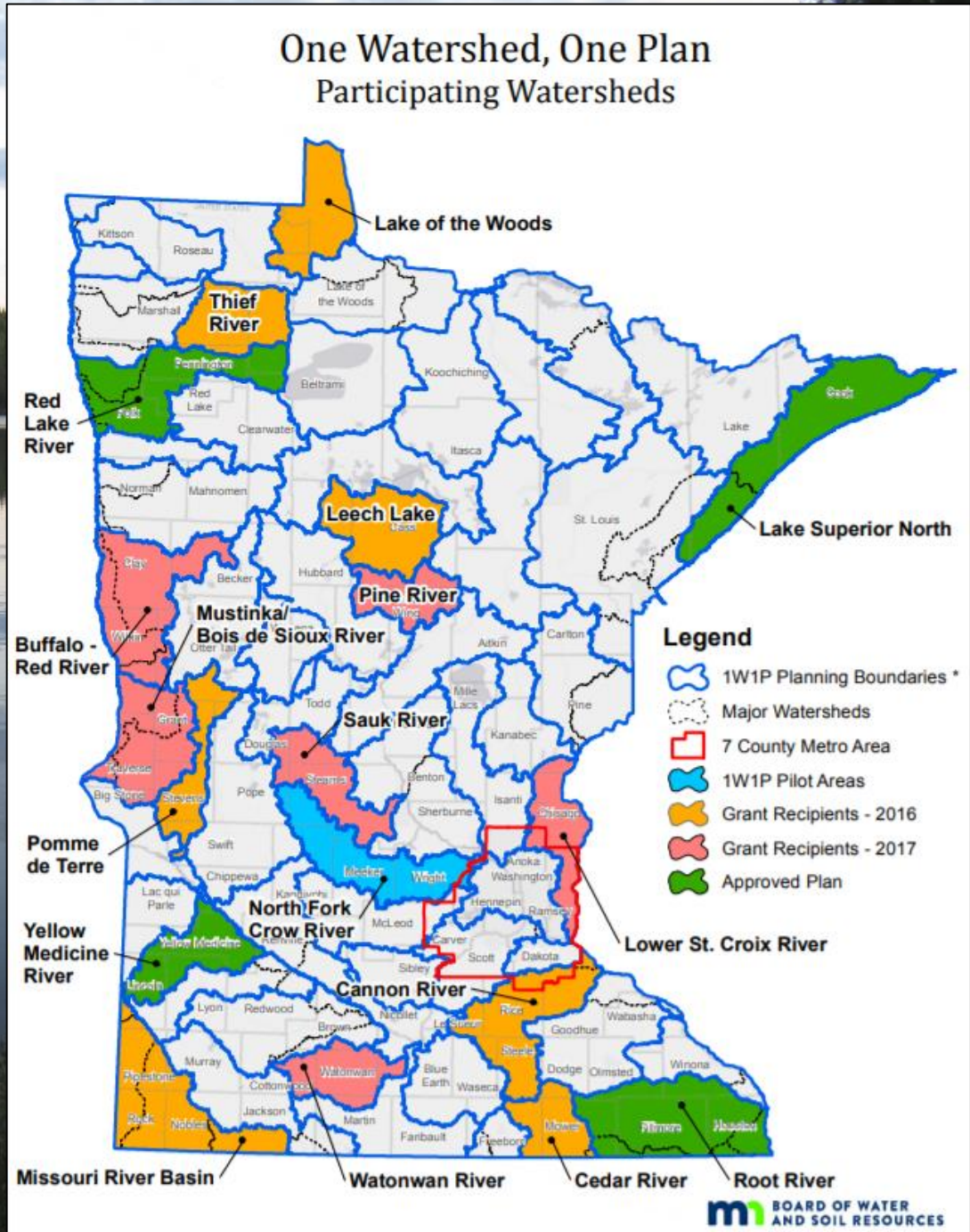
Lower St Croix Comprehensive Watershed Management Plan



Jan. 25, 2021
Policy Committee



The goal of ***One Watershed, One Plan*** is to align local water planning on major watershed boundaries with state strategies towards prioritized, targeted and measurable implementation plans.



Lower St Croix Planning Partners

Counties (4)

Chisago County
Isanti County
Pine County
Washington County

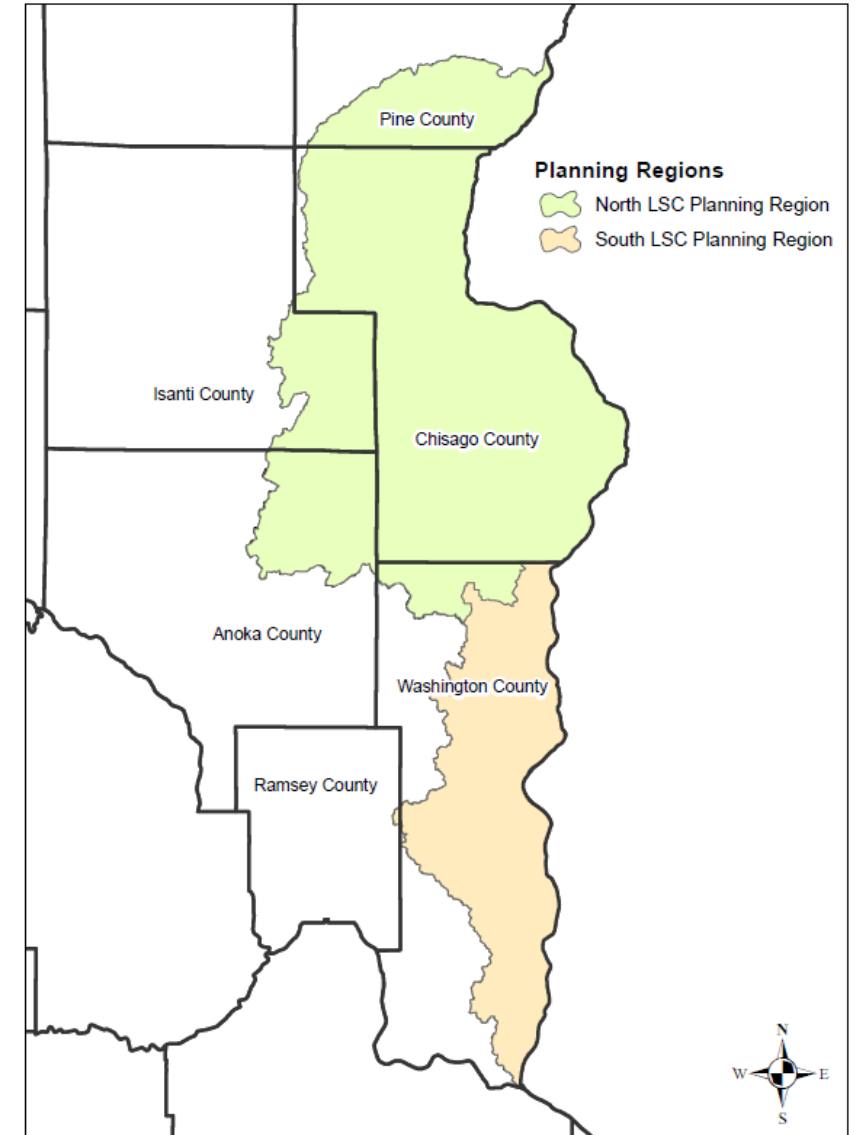
Soil and Water

Conservation Districts (5)

Anoka CD
Chisago SWCD
Isanti SWCD
Pine SWCD
Washington CD

Watershed Organizations (7*)

Browns Creek WD
Carnelian Marine St Croix WD
Comfort Lake Forest Lake WD
Middle St Croix WMO
South Washington WD
Sunrise River WMO
Valley Branch WD



LOWER ST. CROIX “ONE WATERSHED, ONE PLAN”

Vision

The St. Croix River, groundwater, lakes, streams, rivers, wetlands, and upland habitat in the Lower St. Croix watershed sustain healthy ecosystems, recreation, public health, tourism, agriculture, the economy, and quality of life in our communities.

Mission

Through the *Lower St. Croix “One Watershed, One Plan”* process, partners will develop a collaborative and comprehensive plan to guide the protection and restoration of priority natural resources in our region over the next ten years.

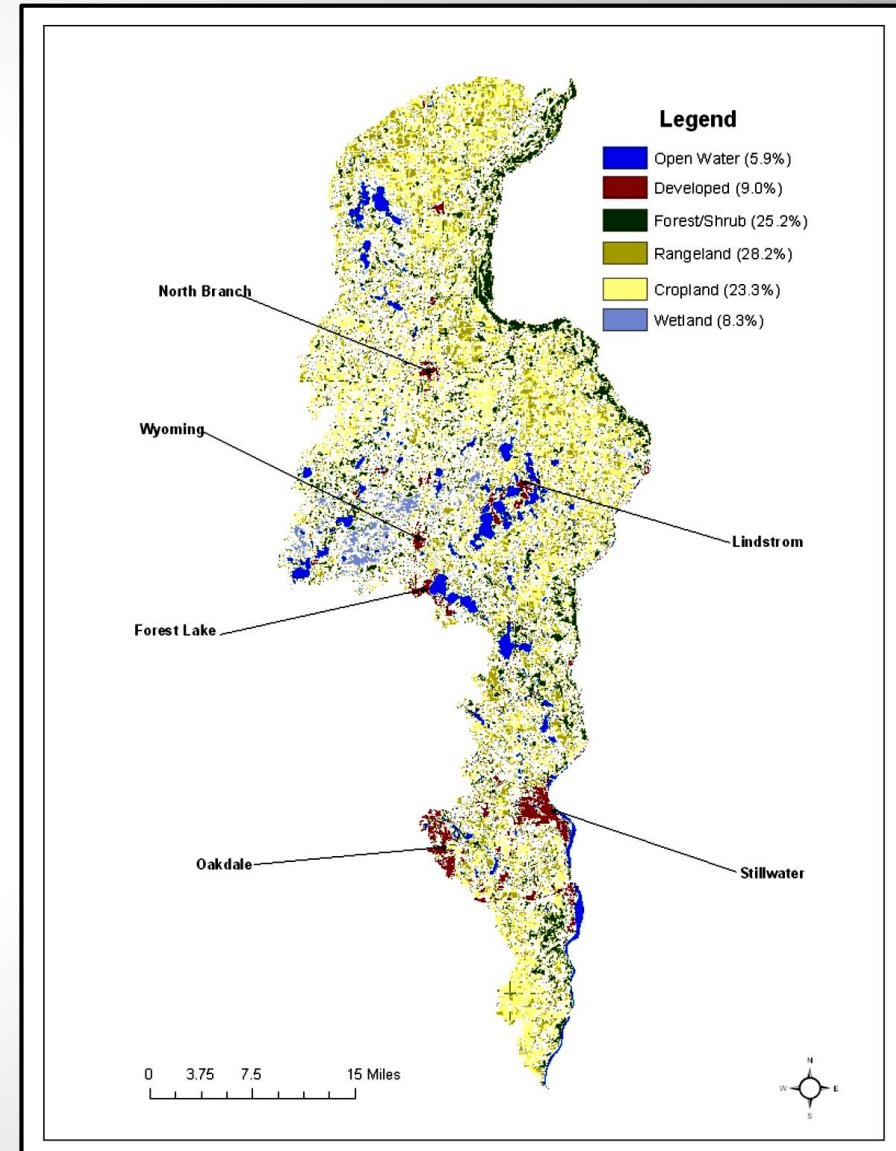
Strategies

- Enhance collaboration and consistency between upstream and downstream neighbors, and between different levels of government;
- Identify and address gaps in data, technology, or implementation funding across the region;
- Avoid duplication of efforts; and
- Make efficient use of federal, state and local funds to address priority issues and protect/improve valuable natural resources in the Lower St. Croix watershed.

Adopted by Policy Committee on 1-28-19

Lower St. Croix Watershed

- 915 sq. miles
- 6 counties
- 60 municipalities and townships
- Land use:
 - 25 % Forest
 - 22 % Grassland
 - 19 % Wetland
 - 17 % Row Crops
 - 10 % Developed
 - 7 % Open water
- Interactive Map:
 - <https://maps.barr.com/LSCWD/1W1P/index.html#/>



Lakes

- 127 lakes covering 40,000 acres
- 50 lakes not meeting water quality standards for nutrients
- Many different types (deep, shallow, groundwater dependent)
- Wide range of uses and conditions



Highly
Developed

High
Recreation
Use

Natural
Environment

Remote with
few impacts



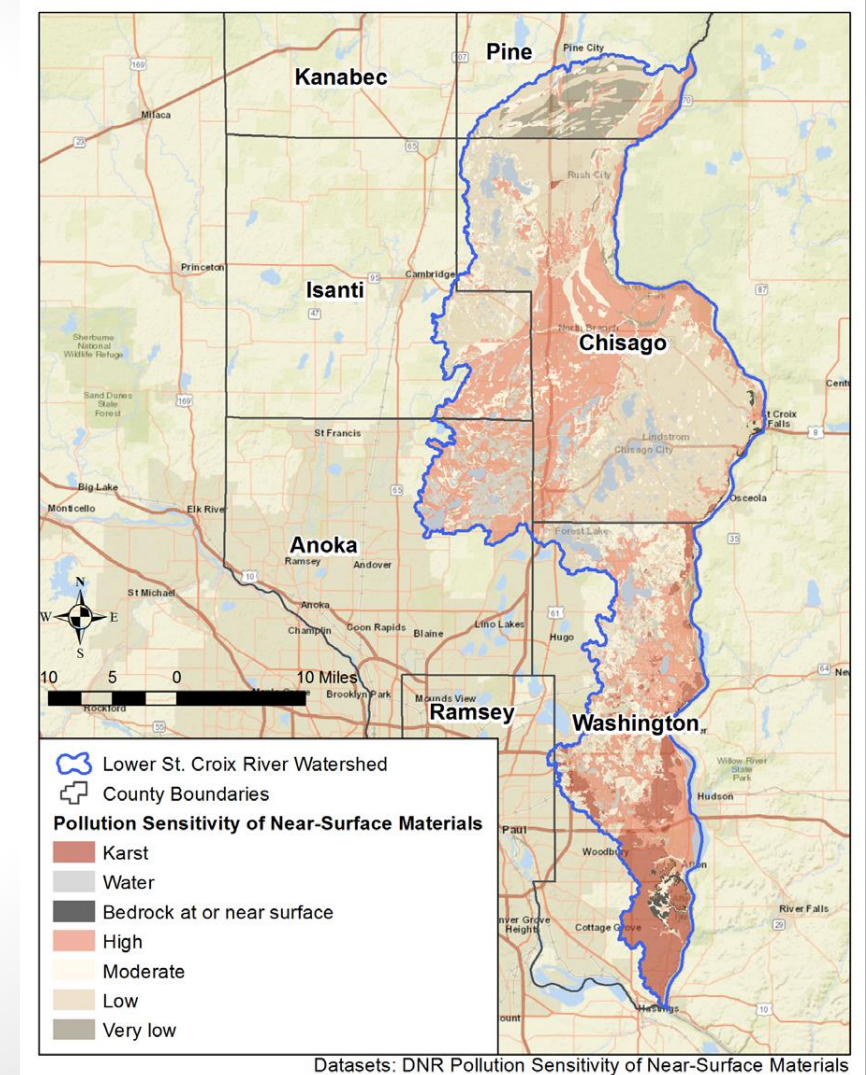
Rivers and Streams

- 1,000 miles of streams, rivers, ditches
- 146 miles not meeting standards
- 97 miles of St. Croix River and Lake St. Croix
- 6 major tributaries to St. Croix River
Rock, Rush, Goose, Sunrise, Brown's, Valley Branch
- 15 trout streams

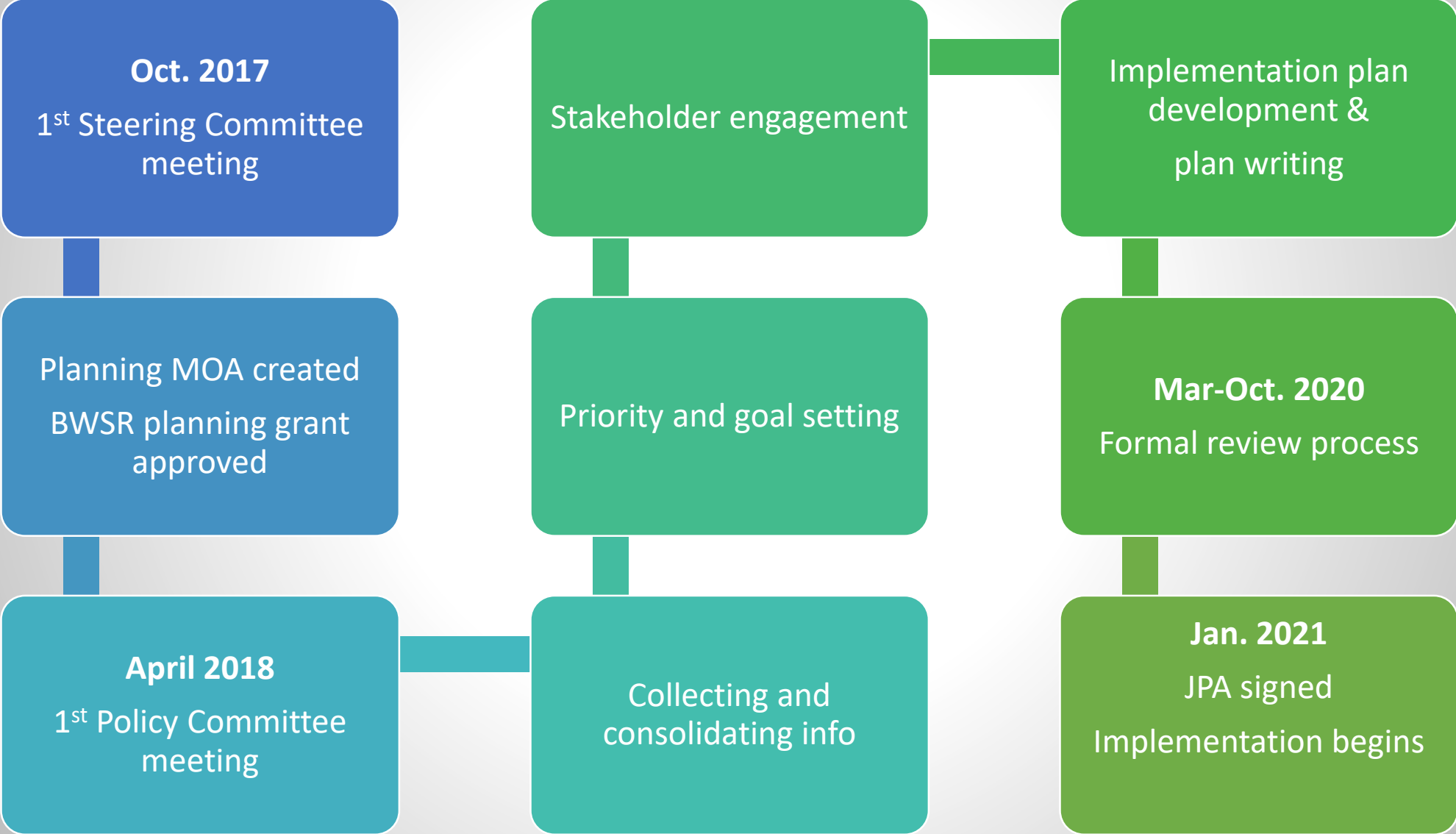


Groundwater

- 100% of drinking water supply
- Use increased by 50% from 1990 to 2016
- Contamination in southern Washington County – data lacking in other locations



Planning process:



Stakeholder Engagement



- Workshops and public meetings (~300 attendees)
 - July 11, 2018 – Hudson
 - Aug. 27, 2018 – Taylors Falls
 - Sept. 26, 2018 – North Branch
 - Feb. 2, 2019 - Scandia
- On-line public survey (86 responses)
- Farmer interviews (12) and mailed survey (387 responses)
- Advisory Committee – 32 members from local and state agencies
- Review stakeholder input from other recent planning processes

Plan Contents

Recommended funding allocation:

- **70% Implementation**
 - 25% shared services + 45% project expenses
- **25% Prioritization and Analysis**
- **5% Administration**

Priority locations:

- St. Croix River and tributaries
- Sunrise River and tributaries
- Regionally significant lakes



A top-down photograph of a variety of fresh vegetables. In the top left, there are large green leafy vegetables. Below them are several brown potatoes. In the center, there are several bright red bell peppers and a head of white cauliflower. To the right, there are two pumpkins, one yellow and one white. In the bottom right, there are green leafy vegetables, possibly dill or parsley. The background is a light-colored surface, possibly a table or counter.

Projects and programs

Agricultural outreach, support and projects

- **Hire staff or contractors (1 FTE)** to provide direct assistance to local agricultural producers to identify economical farming practices with water quality benefits, develop whole-farm conservation plans and nutrient management plans, and secure financial support for conservation projects.
- **Provide cost-share support** for projects that improve soil health, reduce runoff to the St. Croix and Sunrise Rivers, and protect groundwater in sensitive regions.



Community outreach, support and projects

- **Expand existing water education program** in Washington County to serve Chisago, Isanti, Anoka and Pine Counties
- **Engage residents, lake associations, businesses and local officials** in clean water projects.
- **Provide outreach support for local cities and townships** that wish to update policies and ordinances to better protect water resources during development and redevelopment projects
- **Provide cost-share funding** for shoreline restoration and stormwater reduction projects



Create or restore 1000 acres of wetlands in high priority locations

- Increase resiliency against flooding
- Provide natural treatment of water flowing downstream to the St. Croix River and other water resources



Protect 1000 acres of critical habitat in high priority locations

- Expand existing habitat corridors
- Protect tributaries near impaired waters
- Protect endangered species



Use diagnostic monitoring, computer modeling, field investigations, and cost benefit analyses to identify best value projects and best locations to achieve clean water goals

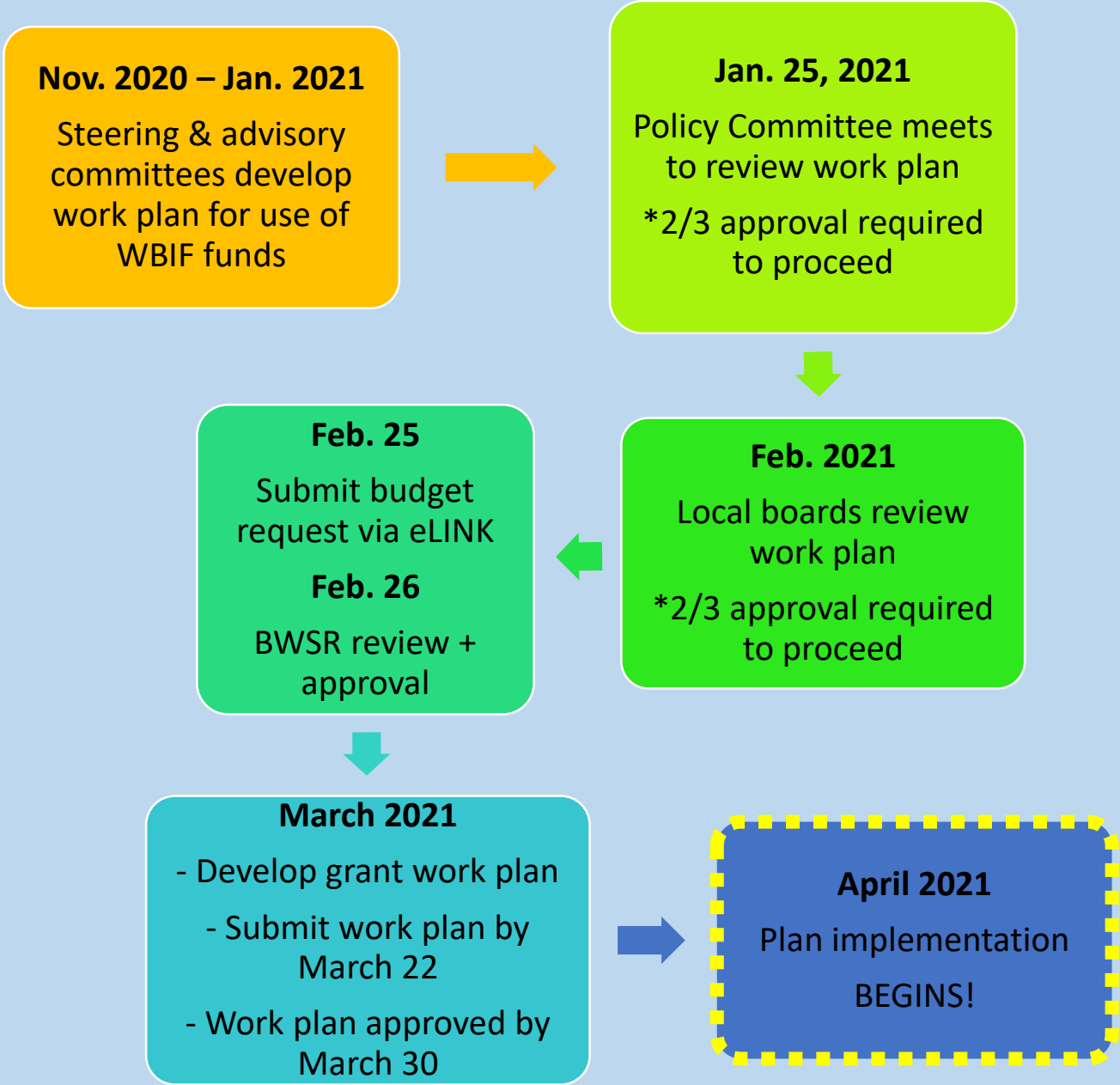
Funding available for plan implementation

\$1.2M in watershed based implementation funds (WBIF) for 2021-22

- Combines \$793K in LSC metro funding + \$471K in basin-wide funding
- Delivered through a grant administered by MN Board of Water and Soil Resources
- 10-year plan

Other funding sources:

- Local funds (City, county, watershed organization)
- State grants (BWSR, MDH, DNR, MPCA, MDA, LCCMR)
- Metropolitan Council
- Federal funding
- Private funds





Angie Hong

East Metro Water Resource Education Program
angie.hong@mnwcd.org or 952-261-9599

www.lsc1w1p.org