

# Lower St Croix One Watershed, One Plan



Feb. 20, 2020

North Branch Workshop

# Participants in the Lower St Croix 1W1P

## Counties (4)

Chisago County  
Isanti County  
Pine County  
Washington County

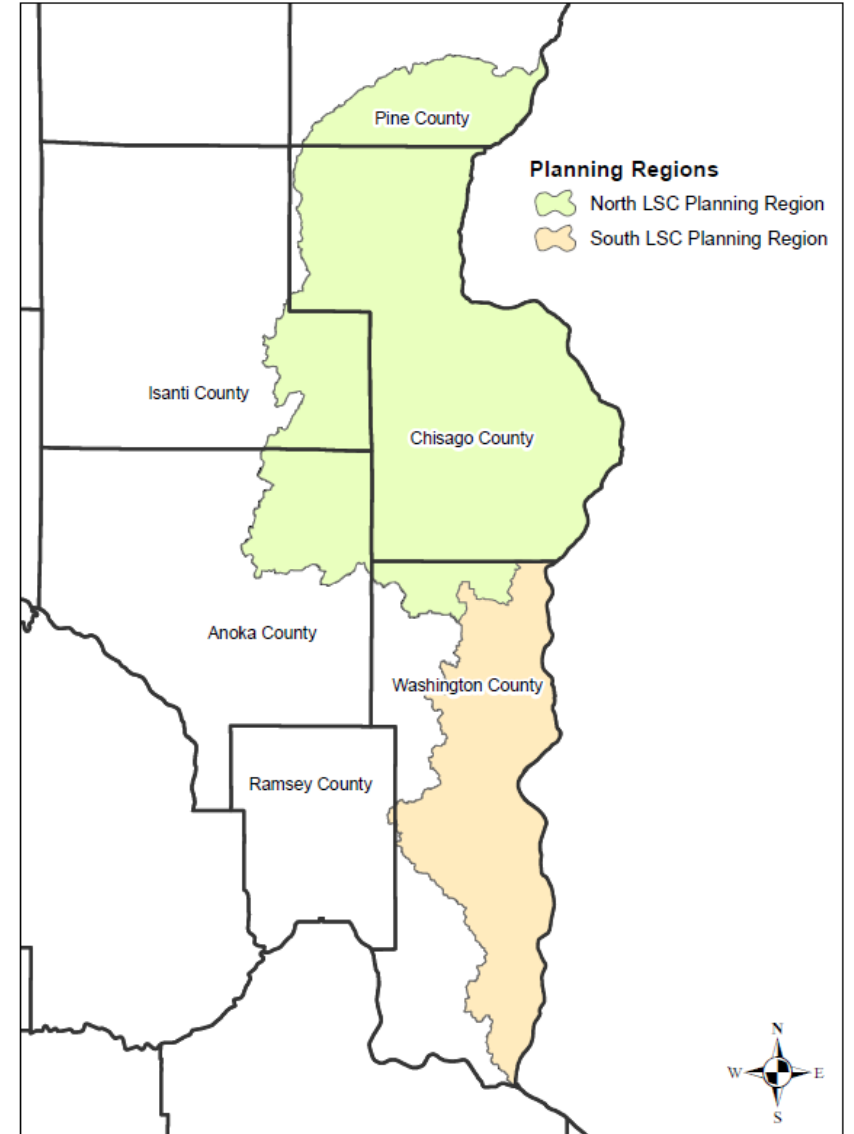
## Soil and Water

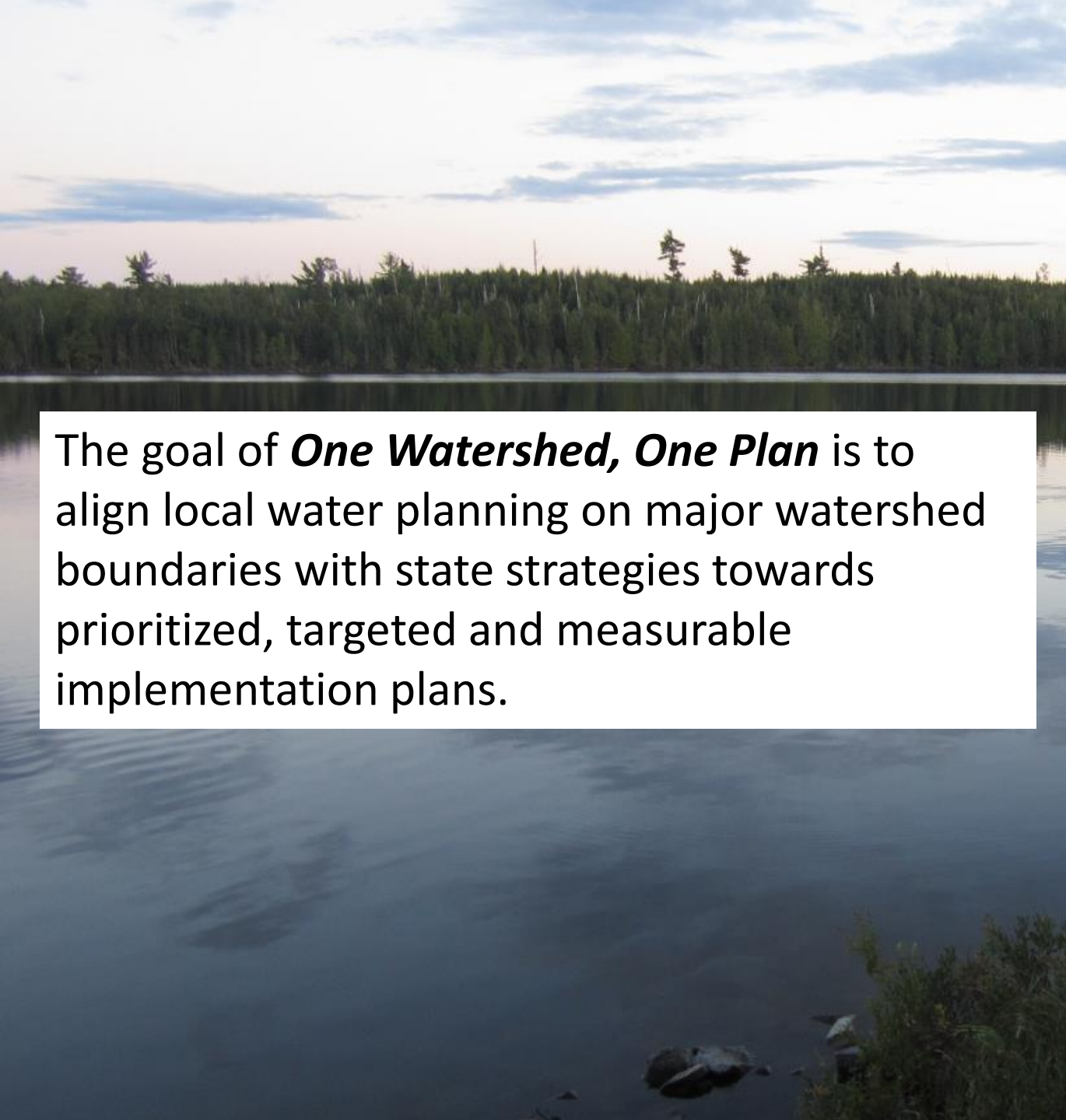
## Conservation Districts (5)

Anoka CD  
Chisago SWCD  
Isanti SWCD  
Pine SWCD  
Washington CD

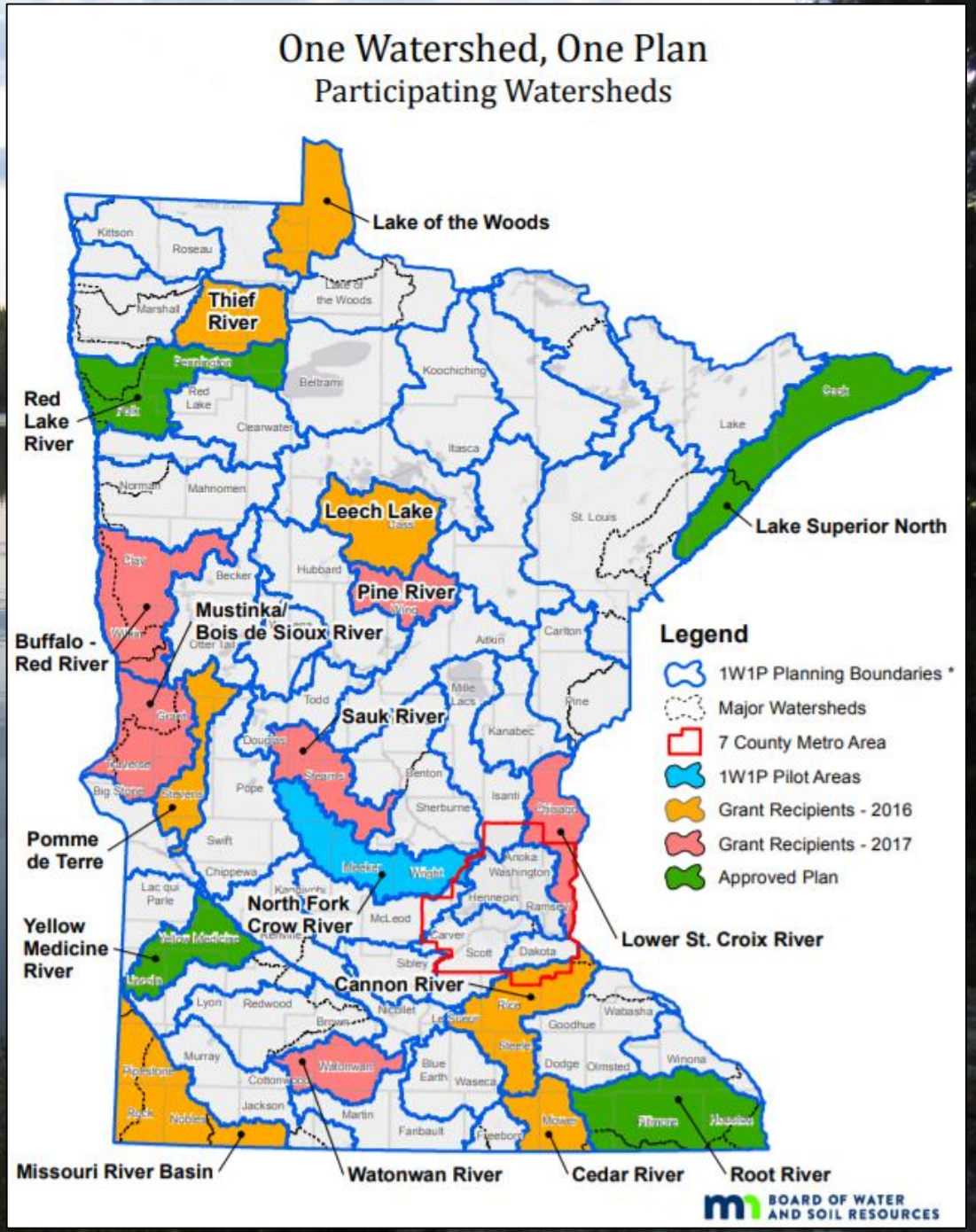
## Watershed Organizations (6)

Browns Creek WD  
Carnelian Marine St Croix WD  
Comfort Lake Forest Lake WD  
Middle St Croix WMO  
South Washington WD  
Sunrise River WMO





The goal of ***One Watershed, One Plan*** is to align local water planning on major watershed boundaries with state strategies towards prioritized, targeted and measurable implementation plans.



# LOWER ST. CROIX “ONE WATERSHED, ONE PLAN”

## **Vision**

The St. Croix River, groundwater, lakes, streams, rivers, wetlands, and upland habitat in the Lower St. Croix watershed sustain healthy ecosystems, recreation, public health, tourism, agriculture, the economy, and quality of life in our communities.

## **Mission**

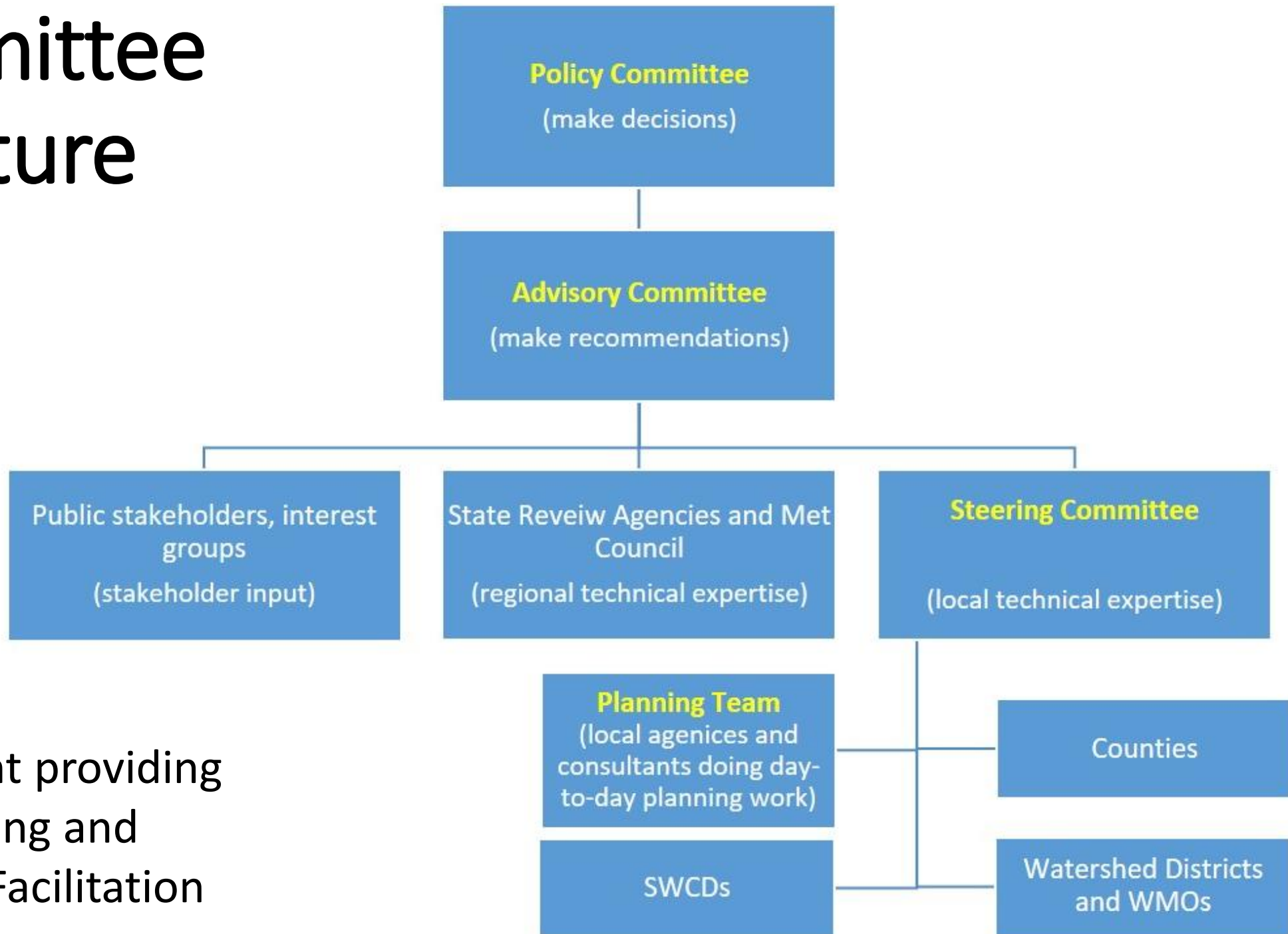
Through the *Lower St. Croix “One Watershed, One Plan”* process, partners will develop a collaborative and comprehensive plan to guide the protection and restoration of priority natural resources in our region over the next ten years.

## **Strategies**

- Enhance collaboration and consistency between upstream and downstream neighbors, and between different levels of government;
- Identify and address gaps in data, technology, or implementation funding across the region;
- Avoid duplication of efforts; and
- Make efficient use of federal, state and local funds to address priority issues and protect/improve valuable natural resources in the Lower St. Croix watershed.

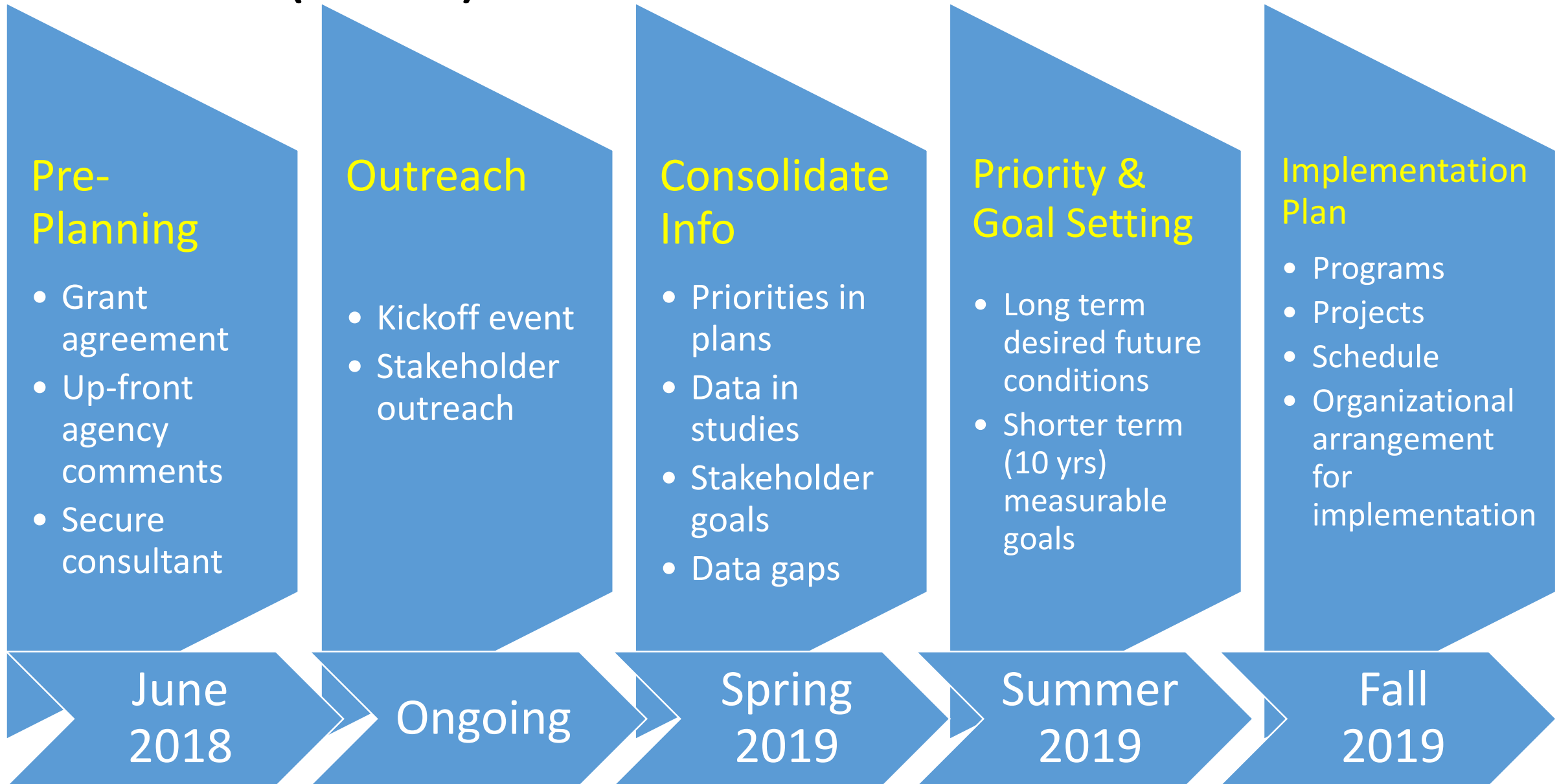
*Adopted by Policy Committee on 1-28-19*

# Committee Structure



Consultant providing  
Plan Writing and  
Meeting Facilitation

# Timeline (1 of 2)



# Timeline (2 of 2)

## Write Plan

- Basin-wide priorities
- Detail where it will replace local plans

Winter  
2019-20

## Formal Review Process

- BWSR and State review agencies
- Revisions

March  
2020

## State Approval

- Approval by BWSR
- Grant expires

June  
2020

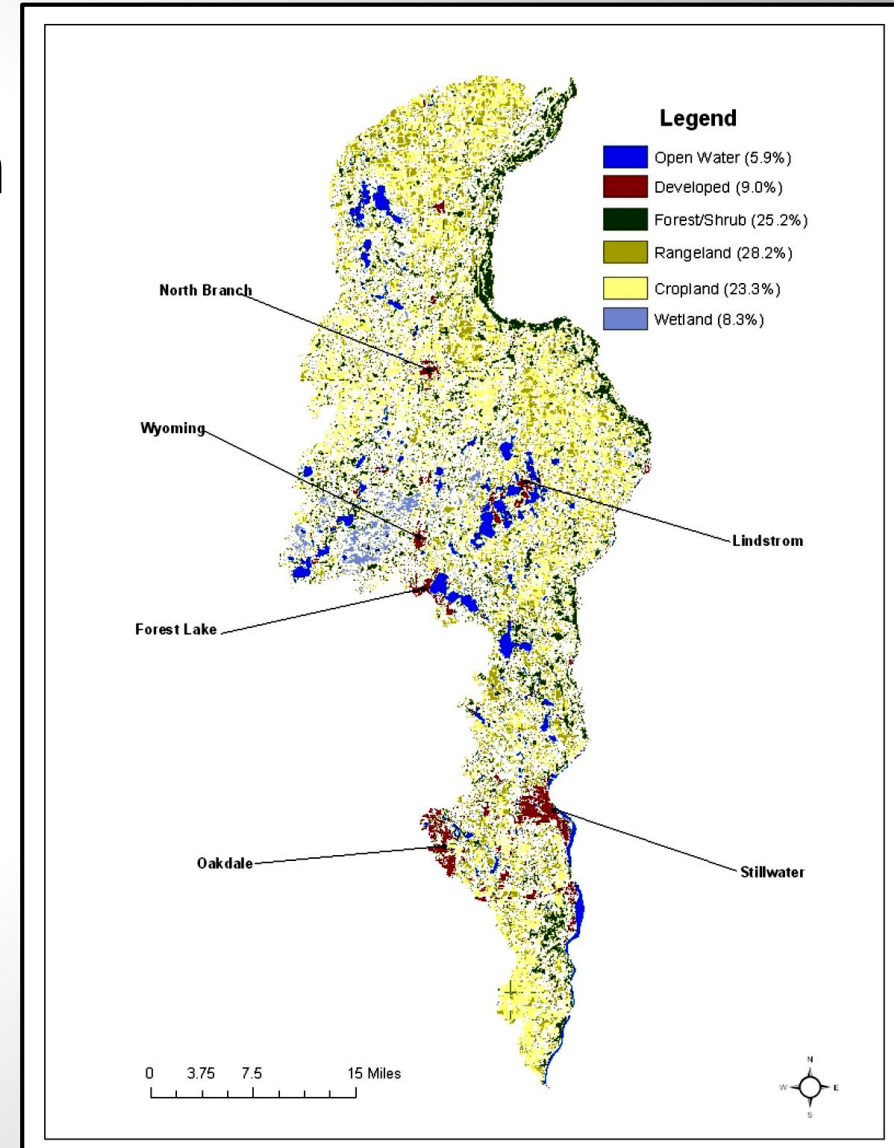
## Local Adoption

- Local adoption

Later in  
2020

# Land and Water Resources Inventory

- Watershed = 915 miles<sup>2</sup>
- North Central Hardwood Forest ecoregion
- 6 counties (0.1% in Ramsey)
- 60 municipalities and townships
- [Land use](#) (2013)
  - 25 % Forest
  - 22 % Grassland (inc. hay & pasture)
  - 19 % Wetland
  - 17 % Row Crops
  - 10 % Developed
  - 7 % Open water





# Lakes

- 127 lakes covering 40,000 acres
- 50 lakes not meeting water quality standards for nutrients
- Many different types (deep, shallow, groundwater dependent)
- Wide range of uses and conditions



Highly  
Developed

High  
Recreation  
Use

Natural  
Environment

Remote with  
few impacts



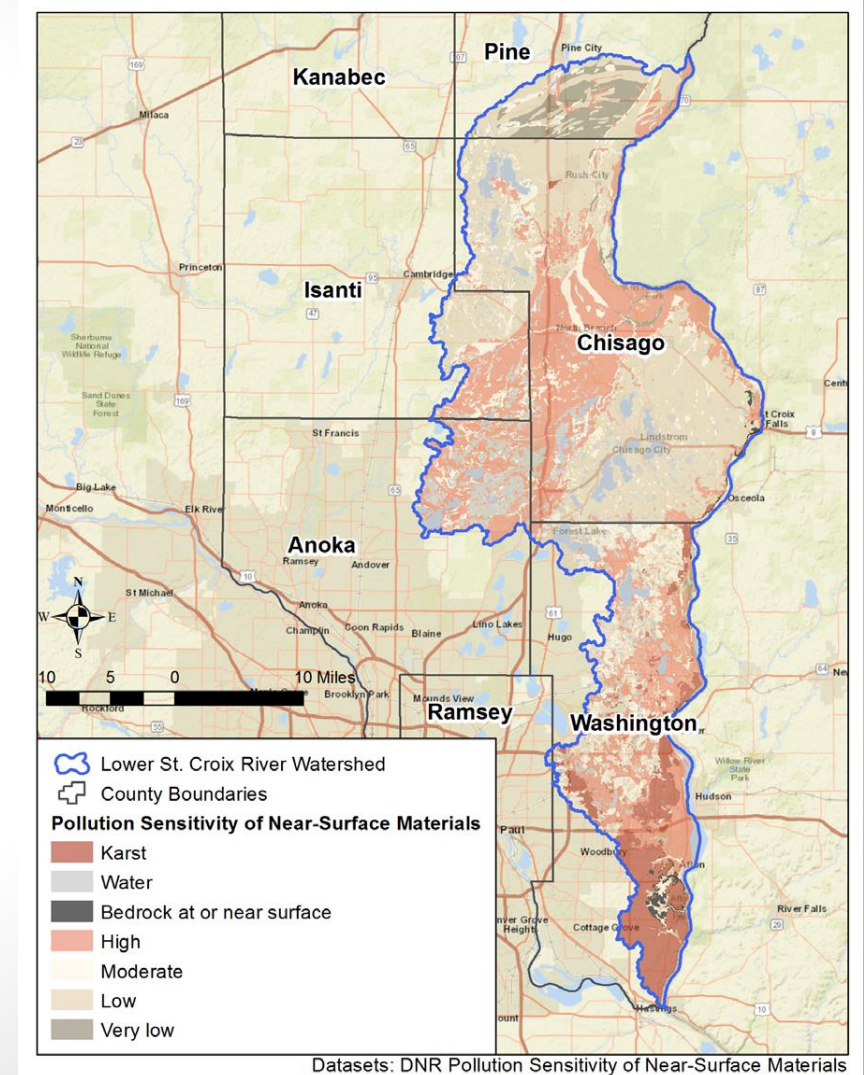
# Rivers and Streams

- 1,000 miles of streams, rivers, ditches
- 146 miles not meeting standards
- 97 miles of St. Croix River and Lake St. Croix
- 6 major tributaries to St. Croix River  
Rock, Rush, Goose, Sunrise, Brown's, Valley Branch
- 15 trout streams



# Groundwater

- 100% of drinking water in watershed
- 80% use = public water supply; industrial processing (6.4%), ag irrigation (2%)
- Use increased by 50% from 1990 to 2016
- Gradients of pollution sensitivity across watershed
- Various contaminants found in wells mostly in southern Washington Co; data are lacking in other areas

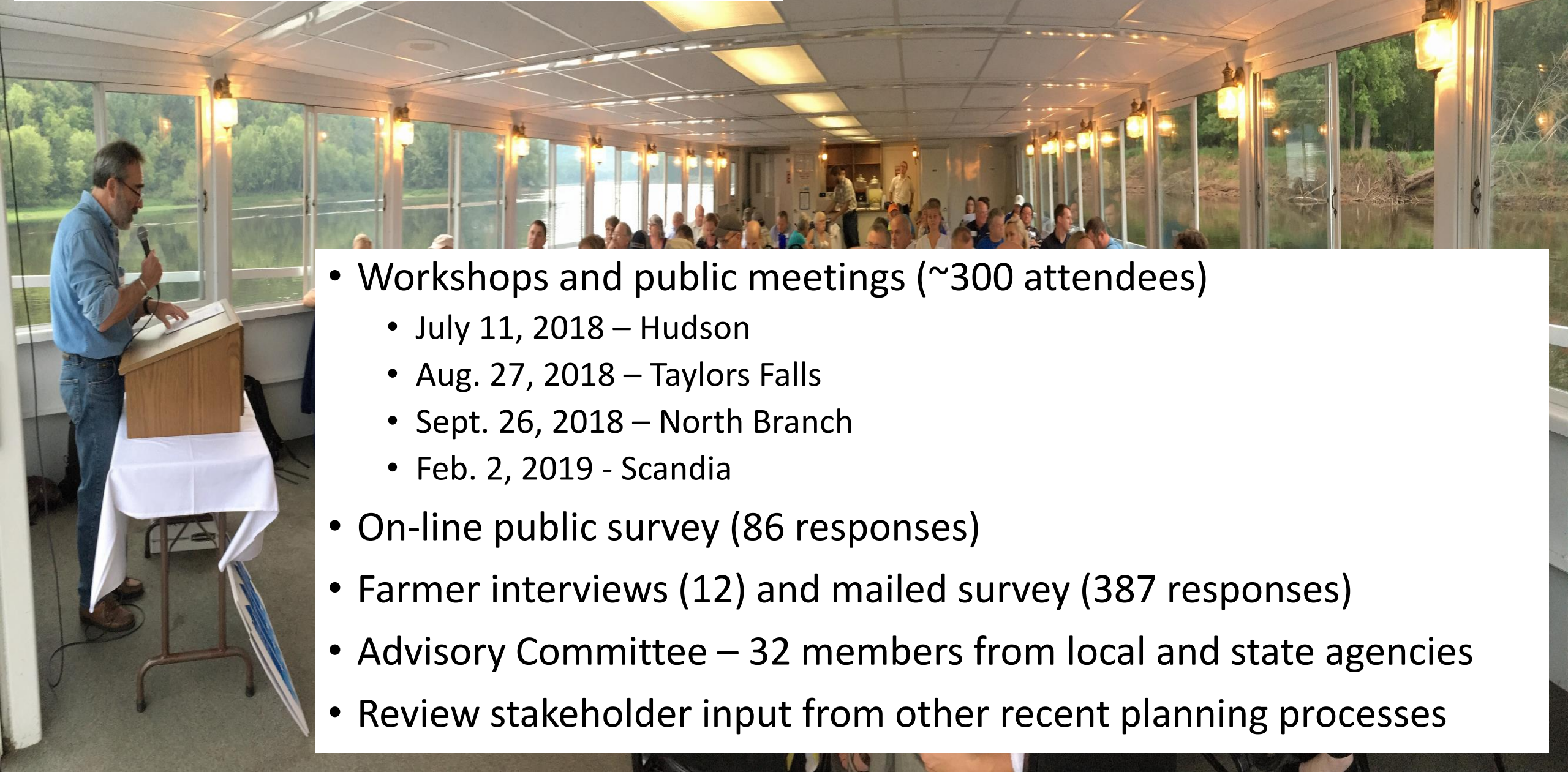


# Interactive Map

<https://maps.barr.com/LSCWD/1W1P/index.html#/>



# Stakeholder Engagement



- Workshops and public meetings (~300 attendees)
  - July 11, 2018 – Hudson
  - Aug. 27, 2018 – Taylors Falls
  - Sept. 26, 2018 – North Branch
  - Feb. 2, 2019 - Scandia
- On-line public survey (86 responses)
- Farmer interviews (12) and mailed survey (387 responses)
- Advisory Committee – 32 members from local and state agencies
- Review stakeholder input from other recent planning processes

## Key themes

### 1. VALUES:

- Most people view the St. Croix River as our highest priority regional water resource, but think that lakes are very important as well.

### 2. CONCERNS:

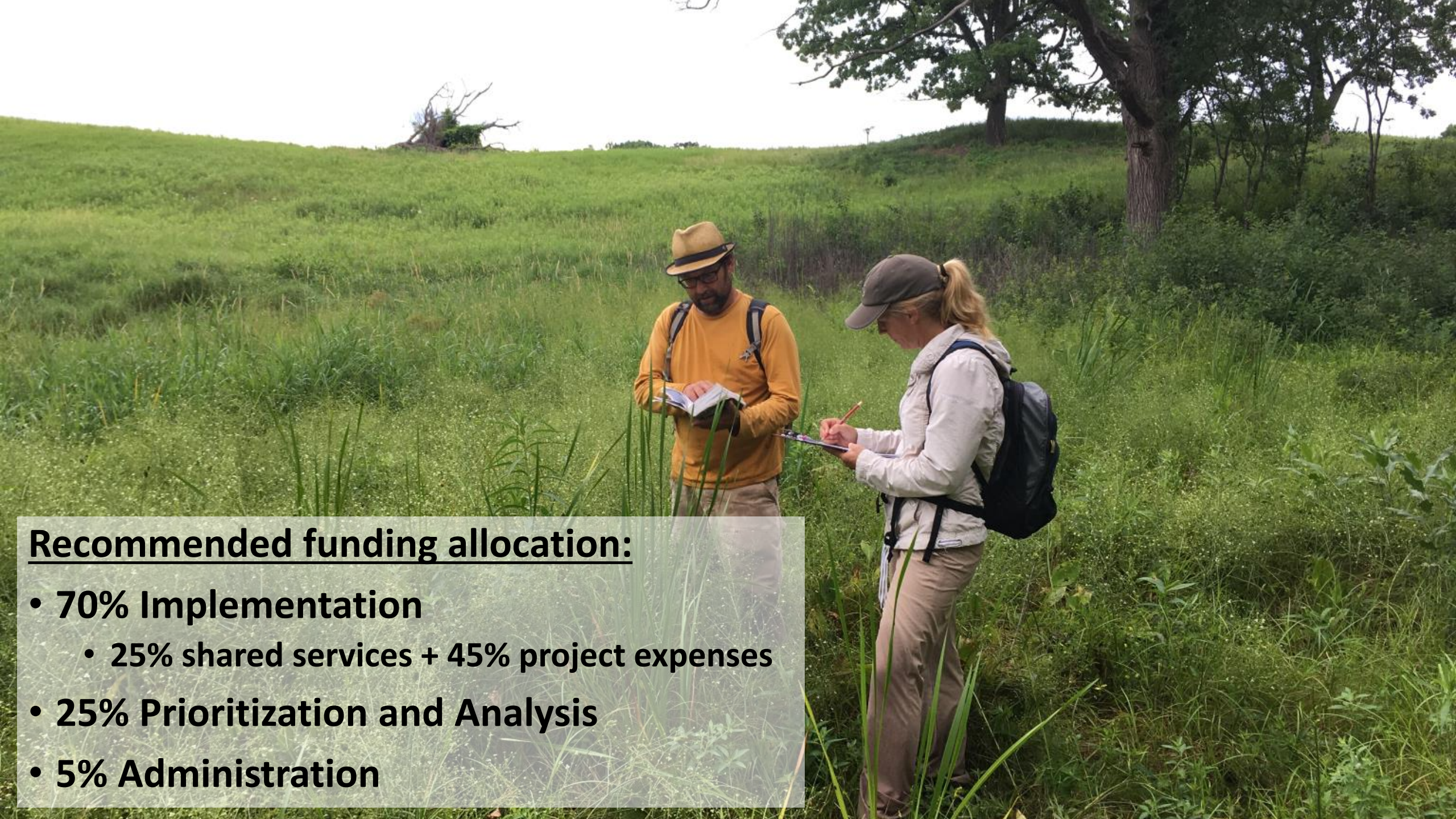
- Runoff pollution (especially from agricultural areas)
- Groundwater pollution
- Aquatic Invasive Species
- Data, staff capacity and financial resources are not equal across the watershed

### 3. DESIRES:

- Protect existing high quality natural resources.
- Restore impaired rivers and lakes.
- Locally led watershed management and collaboration across levels of government and with the public.
- More public education. Outreach and support to help farmers and local communities implement conservation practices.

**So, what is in the plan???**





**Recommended funding allocation:**

- **70% Implementation**
  - 25% shared services + 45% project expenses
- **25% Prioritization and Analysis**
- **5% Administration**



## Priority locations:

- St. Croix River and tributaries
- Sunrise River and tributaries
- Regionally significant lakes





# Proposed activities

Priority will be placed on projects and programs that benefit the entire region, provide multiple benefits, and make best use of limited funds.

## Agricultural outreach, support and projects

- **Hire staff or contractors (1 FTE)** to provide direct assistance to local agricultural producers to identify economical farming practices with water quality benefits, develop whole-farm conservation plans and nutrient management plans, and secure financial support for conservation projects.
- **Provide cost-share support** for projects that improve soil health, reduce runoff to the St. Croix and Sunrise Rivers, and protect groundwater in sensitive regions.



## Community outreach, support and projects

- **Expand existing water education program** in Washington County to serve Chisago, Isanti, Anoka and Pine Counties
- **Engage residents, lake associations, businesses and local officials** in clean water projects.
- **Provide outreach support for local cities and townships** that wish to update policies and ordinances to better protect water resources during development and redevelopment projects
- **Provide cost-share funding** for shoreline restoration and stormwater reduction projects



## **Create or restore 1000 acres of wetlands in high priority locations**

- **Increase resiliency against flooding**
- **Provide natural treatment of water flowing downstream to the St. Croix River and other water resources**



## **Protect 1000 acres of critical habitat in high priority locations**

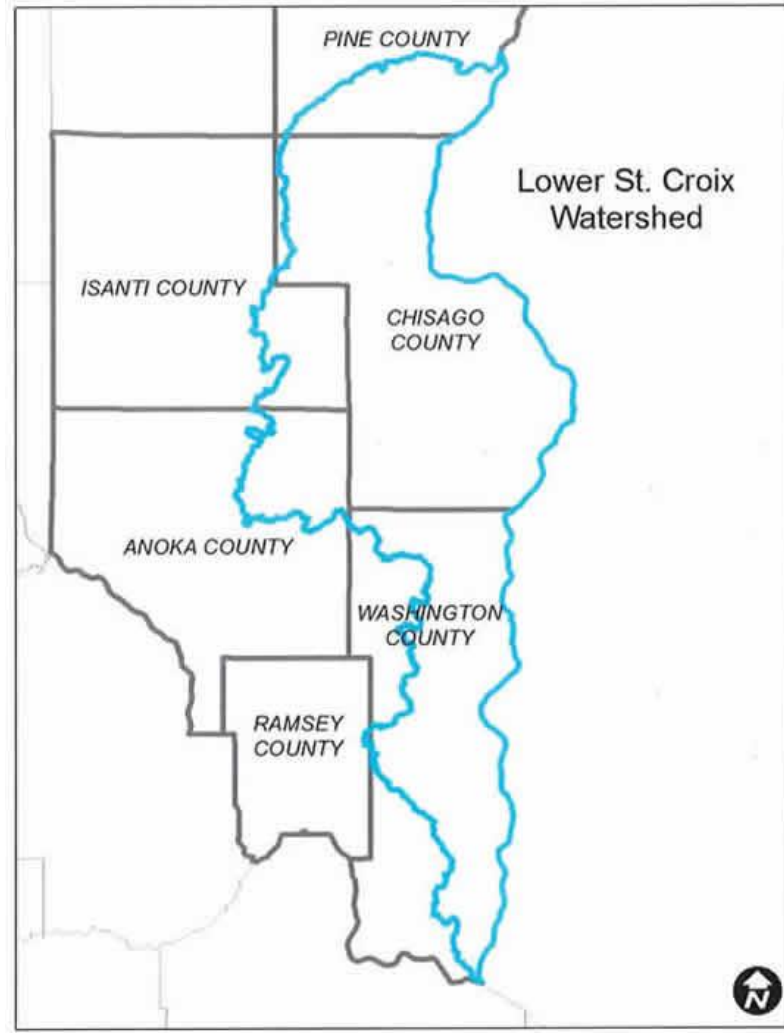
- Expand existing habitat corridors
- Protect tributaries near impaired waters
- Protect endangered species



**Use diagnostic monitoring, computer modeling, field investigations, and cost benefit analyses** to identify best value projects and best locations to achieve clean water goals

# Special State Funding

- \$471,070 for the implementation of the Lower St. Croix 1W1P
- One entity will receive funds. Can pass funds by subcontracts to others.



- \$793,461 for implementation of:
  - Lower St. Croix 1W1P
  - Metro Watershed Management Plans
  - Metro County Groundwater Plans
  - Metro Soil and Water Conservation District (SWCD) Annual Work Plans
- Could be used in non-metro areas as well

# Other funding sources

- Local funds
  - City, county, watershed organization
- Other state funding
  - Board of Water and Soil Resources (BWSR)
  - Department of Health
  - Department of Natural Resources (DNR)
  - Pollution Control Agency (MPCA)
  - Department of Agriculture
  - LCCMR
- Metropolitan Council
- Federal funding
- Private funds







**Angie Hong**

East Metro Water Resource Education Program  
angie.hong@mnwcd.org or 651-330-8220 x.35

**[www.lsc1w1p.org](http://www.lsc1w1p.org)**

# Lower St. Croix 1W1P

Entity	Acres in Lower St. Croix 1W1P Planning Area	Percentage of Lower St. Croix 1W1P Planning Area
<b>Counties</b>		
Chisago County	277,185	47.3%
Washington County	169,889	29.0%
Pine County	50,207	8.6%
Anoka County	45,192	7.7%
Isanti County	42,929	7.3%
Ramsey County	335	0.1%
<b>Soil and Water Conservation Districts</b>		
Chisago SWCD	277,185	47.32%
Washington Conservation District	169,889	29.0%
Pine SWCD	50,207	8.6%
Anoka Conservation District	45,192	7.7%
Isanti SWCD	42,929	7.33%
<b>Watershed Districts</b>		
Carnelian Marine St. Croix	51,840	8.85%
Valley Branch	44,800	7.65%
South Washington	33,000	5.63%
Comfort Lake Forest Lake	30,000	5.12%
Brown's Creek	18,000	3.07%
<b>Watershed Management Organizations</b>		
Sunrise River	45,192	7.7%
Middle St. Croix	12,670	2.16%
Entire Planning Area	585,737	100%

# HOW INTERESTED ARE YOU IN THE FOLLOWING PRACTICES?

Very Interested    Somewhat Interested

