

Pine SWCD's
Success with
Lower St. Croix
Watershed Based
Implementation
Funds

Paul Swanson
Pine SWCD

We will be looking at:

- A brief overview of Pine SWCD
- Success with WBIF
 - Hinze Farm





Pine County

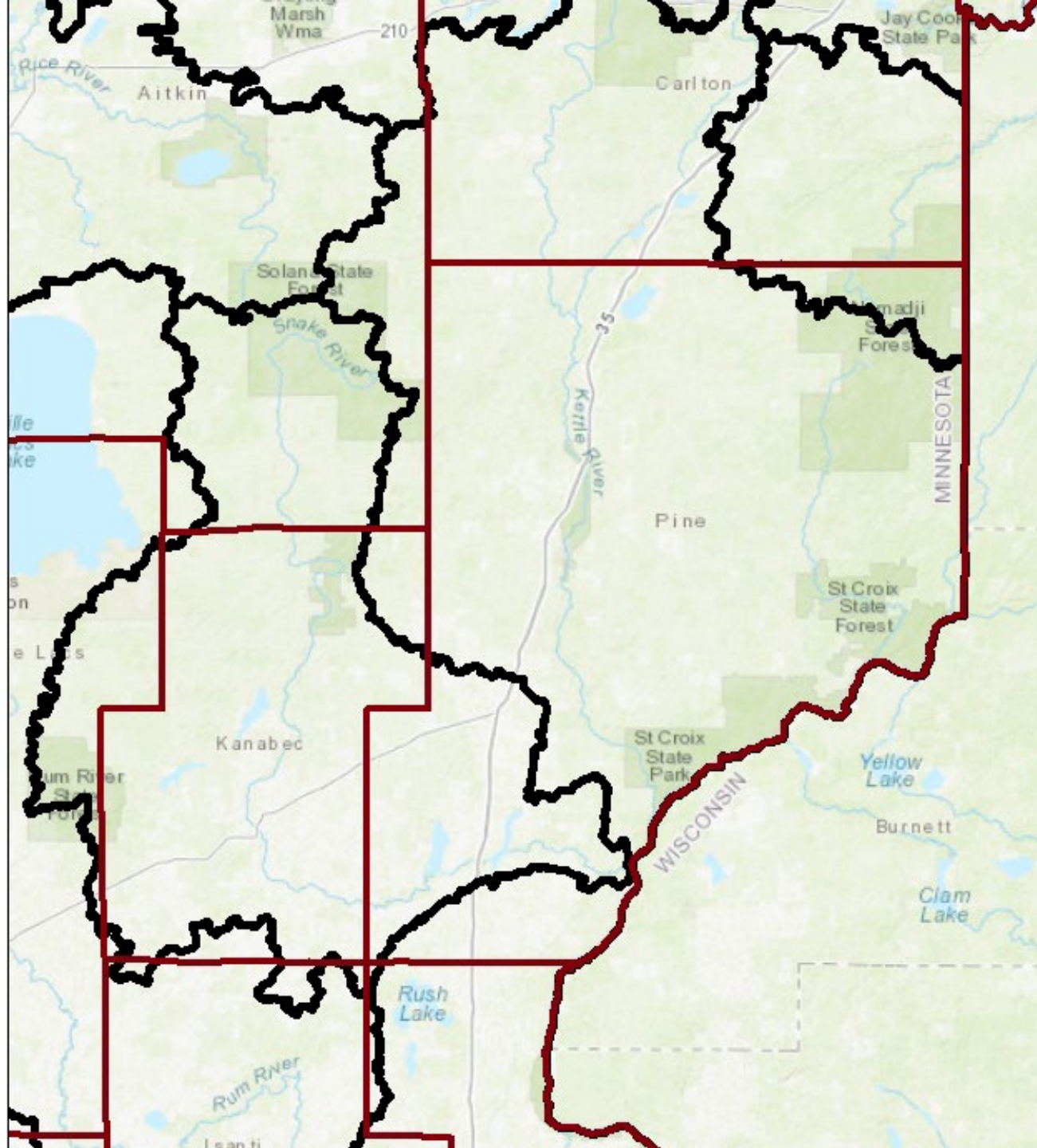
Soil & Water
CONSERVATION DISTRICT

A Look at Pine SWCD



At a Glance

- Pine SWCD was established in 1958
- We serve all of Pine County
 - 1,435 sq miles (13th largest)
 - *23 sq miles of water, about 2%*
 - A population of about 30,000
 - *A mostly rural population with the largest city having a population of 3,197*
- Pine SWCD currently has 5 staff
 - With a PF biologist working 2 days
- A diverse landscape creates a wide range of resource concerns for landowners
 - Forestry
 - Water Resources
 - Wetlands
 - Agriculture
- Pine SWCD has 4 CWMPs
 - Nemadji, Kettle/USC, Snake, LSC



The Lower St. Croix Watershed in Pine County

About 78 sq miles

- 8.5% of the watershed
- 5% of Pine County



**LOWER ST. CROIX WATERSHED
PARTNERSHIP**

Our Shared Success with LSCP WBIF

Hinze Farm



- Randy Hinze
 - 3rd generation farmer
- 400 acres of row crops
 - Started no-till in 2005
 - Now 100%
- Operated a Dairy Farm until 2020
 - Keeps a small heard of steer

Randy's Conservation Work

- MAWQP Certified for 3 years
- Has installed filter strips, WASCBs, and pollinator habitat with NRCS
- Incorporating Cover Crops into his operation
 - Cereal rye and radishes



The Lower St. Croix Partnership

Supporting Landowners with their Conservation Efforts

Livestock Exclusion Fence and Buffer Strip



Construction of WASCBs



Livestock Exclusion Fence and Buffer Strip

- Installed in Fall 2021
 - Project Design through MAWQP
 - Funded by LSCP
- Goal to install fence to keep cattle out of Rock Lake. Native Buffer strip added to restore and protect shoreline
- Estimated reductions of
 - Sediment 1.17T/y
 - Phosphorus 1.7lbs/y





WASCB Installations

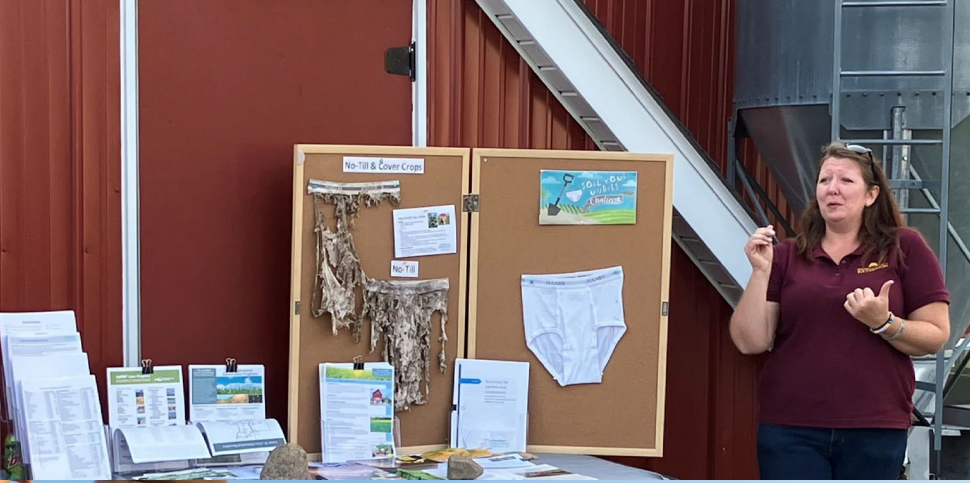


- Installed Spring of 2023
 - Desings by NRCS engineer
 - About 60% of project funded through LSCP
- Designed to reduce over surface waterflow and to repair gully formations
- Estimated Reductions of
 - Sediment 18T/y
 - Phosphorus 20lbs/y



2023 Conservation Cookout





A willingness to share and encourage others

- Showcase his operation and share his success (and failures) with conservation practices.
- Allows other producers to see that these practices can work, and that there are multiple options available.
- Discussing the TEAM that Randy has put together to help him in his success.
- Farmers learning from farmers.



Giving Credit where Credit is Due

2023 Pine County Outstanding Conservationist



Winner of MASWCD 2023 State Outstanding Conservationist



Real Impacts

- Lower St. Croix WBIF is making a real difference to landowners of the watershed.
- Success of this partnership depends on the willingness of landowners like Randy Hinze.
- WBIF opens up opportunities for districts like Pine SWCD to better serve their communities and reach real measurable goals.

Thank You!

Questions?

